

VORTAC LFT	APP CRS	Rwy Idg	<b>5210</b>
<b>109.8</b>	<b>343°</b>	TDZE	<b>74</b>
Chan <b>35</b>		Apt Elev	<b>75</b>

# VOR RWY 36

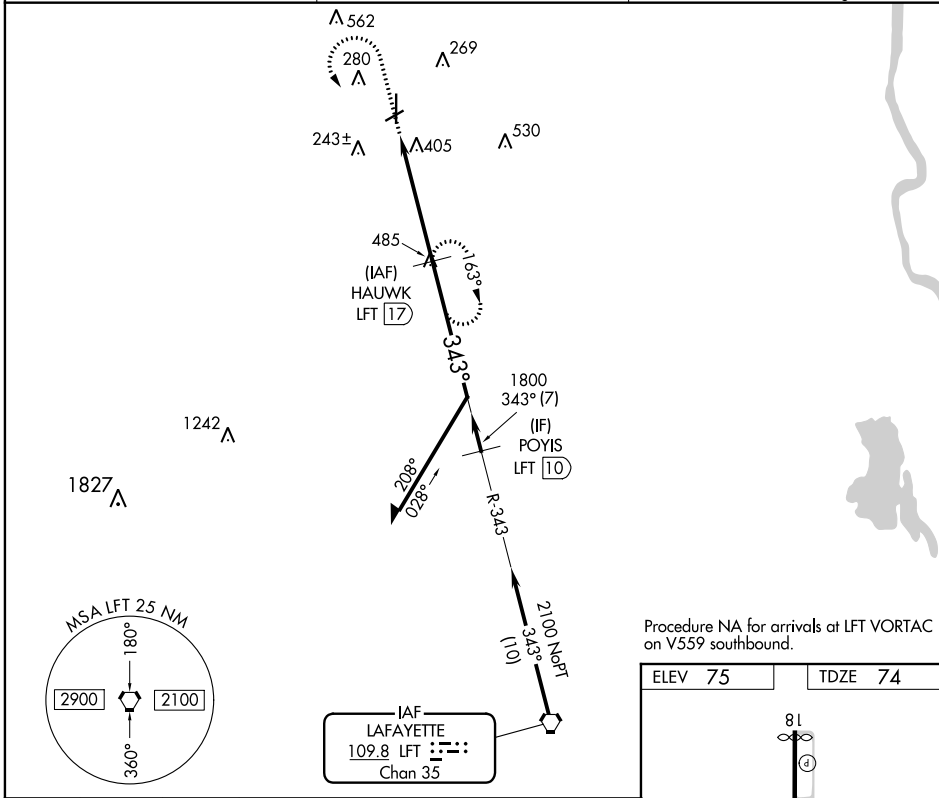
ST LANDRY PARISH (OPL)

DME required.

**▼** Circling Rwy 6, 24 NA at night.  
**▲** Rwy 36 helicopter visibility reduction below 3/4 SM NA.

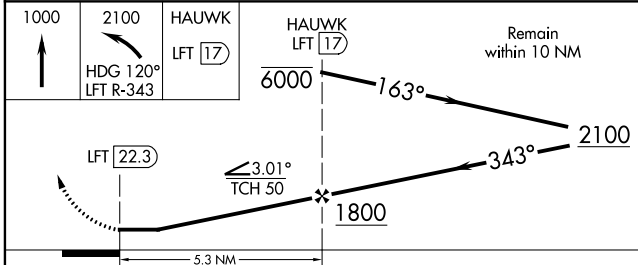
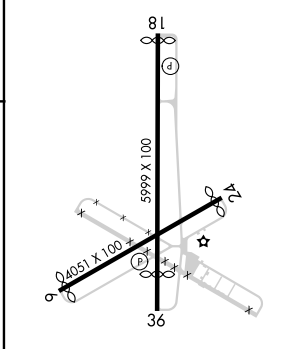
MISSED APPROACH: Climb to 1000 then climbing left turn to 2100 on heading 120° and LFT R-343 to HAUWK/17 DME and hold.

AWOS-3PT <b>118.775</b>	LAFAYETTE APP CON ★ <b>128.7 268.7</b>	UNICOM <b>123.0 (CTAF) 0</b>
----------------------------	---	---------------------------------



Procedure NA for arrivals at LFT VORTAC on V559 southbound.

ELEV <b>75</b>	TDZE <b>74</b>
----------------	----------------



CATEGORY	A	B	C	D
S-36	720-1 646 (700-1)	720-1 1/4 646 (700-1 1/4)	720-1 7/8 646 (700-1 7/8)	720-2 646 (700-2)
CIRCLING	780-1 705 (800-1)	780-1 1/4 705 (800-1 1/4)	780-2 705 (800-2)	920-2 3/4 845 (900-2 3/4)

MIRL Rwy 18-36 **0**  
 REIL Rwy 18 and 36 **0**

SC-4, 28 NOV 2024 to 26 DEC 2024

SC-4, 28 NOV 2024 to 26 DEC 2024