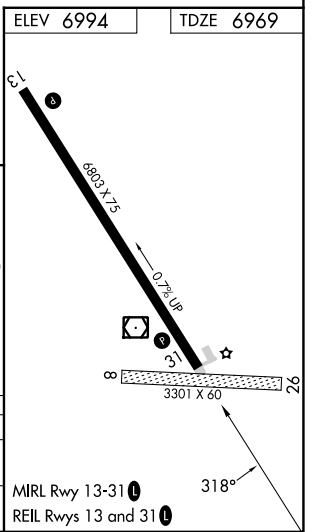
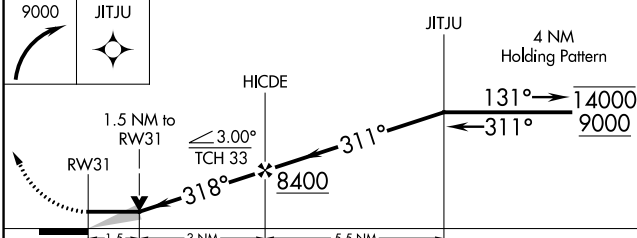
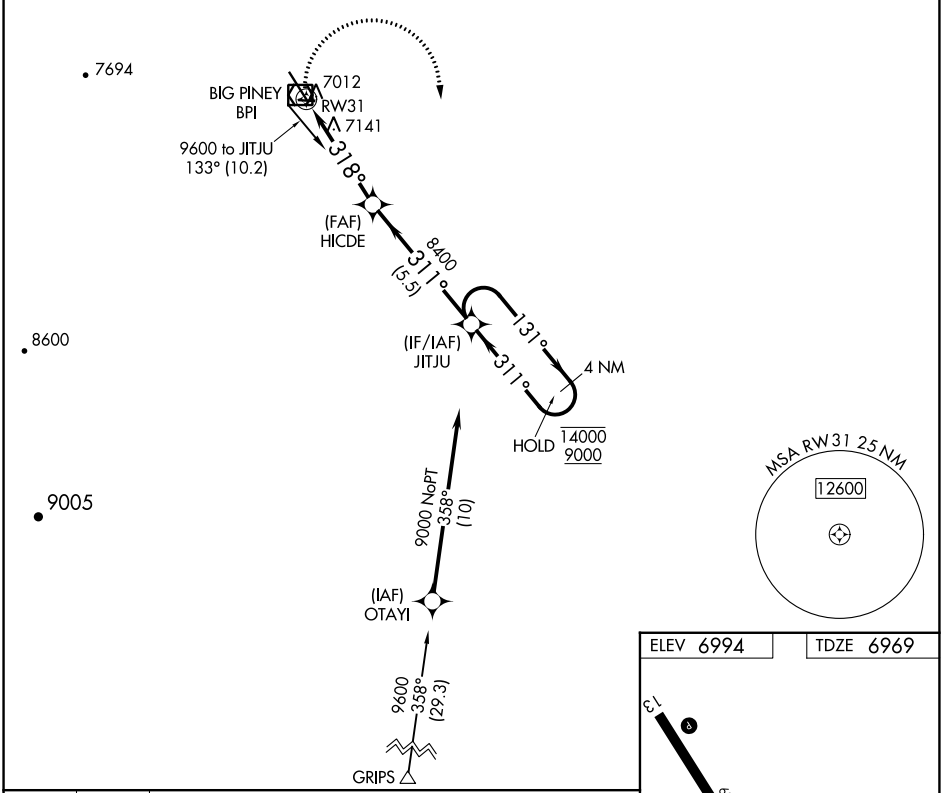


APP CRS 318°	Rwy Idg TDZE Apt Elev	6803 6969 6994
------------------------	-----------------------------	---

RNAV (GPS) RWY 31

MILEY MEML FLD (BPI)

RNP APCH - GPS.		MISSED APPROACH: Climbing right turn to 9000 direct JITJU and hold.	
Circling NA to Rws 8 and 26.		ASOS 135.225	SALT LAKE CENTER 128.35 239.25
		UNICOM 122.8 (CTAF)	122.70



CATEGORY	A	B	C	D
LNVA MDA	7460-1	491 (500-1)	7460-1 3/8	491 (500-1 3/8)
CIRCLING	7460-1 466 (500-1)	7560-1 566 (600-1)	7800-2 1/4 806 (900-2 1/4)	7820-2 3/4 826 (900-2 3/4)

NW-1, 28 NOV 2024 to 26 DEC 2024

NW-1, 28 NOV 2024 to 26 DEC 2024