

APP CRS	Rwy Idg	5002
102°	TDZE	73
	Apt Elev	73

RNAV (GPS) RWY 10

BERMUDA DUNES (UDD)

RNP APCH - GPS.

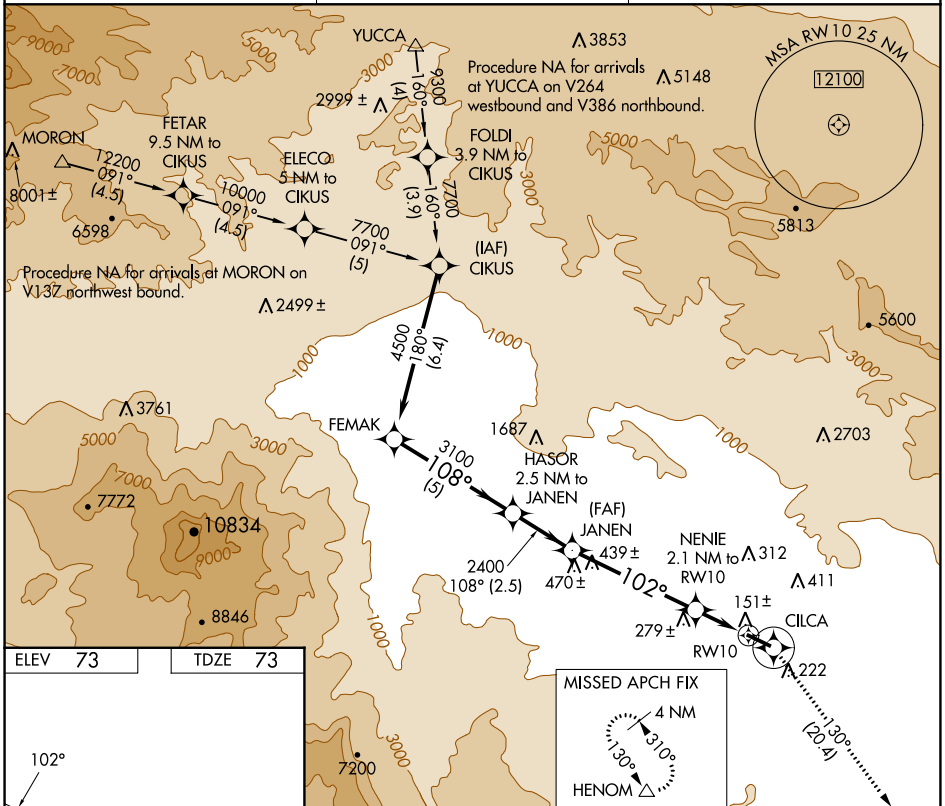
▼ Use Jacqueline Cochran Rgnl altimeter setting.
 ▲ NA Circling Rwy 28 NA at night.

MISSED APPROACH: Climb to 3700 direct CILCA and via 130° track to HENOM and hold.

TRM ASOS
118.325

SOCAL APP CON *
135.275 251.1

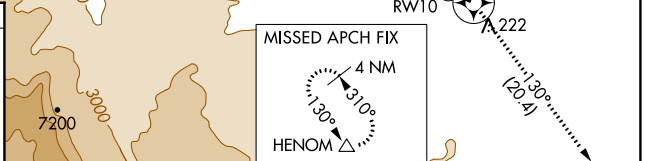
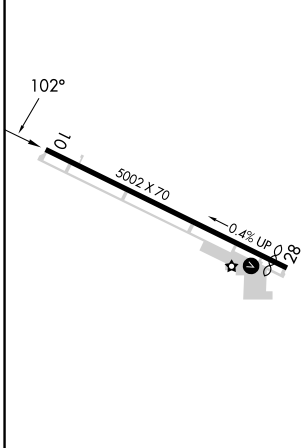
UNICOM
122.8 (CTAF) 0



SW-3, 28 NOV 2024 to 26 DEC 2024

SW-3, 28 NOV 2024 to 26 DEC 2024

ELEV	73	TDZE	73
------	----	------	----



	FEMAK	HASOR 2.5 NM to JANEN	JANEN	3700 CILCA	HENOM
				130° Tr	△
Procedure Turn NA	4500	3100	2400	800	
		108°	102°		
	5 NM	2.5 NM	4.9 NM	2.1 NM	
CATEGORY	A	B	C	D	
LNAV MDA	480-1	407 (500-1)	480-1¼ 407 (500-1¼)	NA	
CIRCLING	700-1	627 (700-1)	1100-3 1027 (1100-3)	NA	