

WAAS CH <b>82618</b> <b>W15A</b>	APP CRS <b>151°</b>	Rwy Idg TDZE Apt Elev	<b>6001</b> <b>121</b> <b>121</b>
--	------------------------	-----------------------------	---

# RNAV (GPS) RWY 15

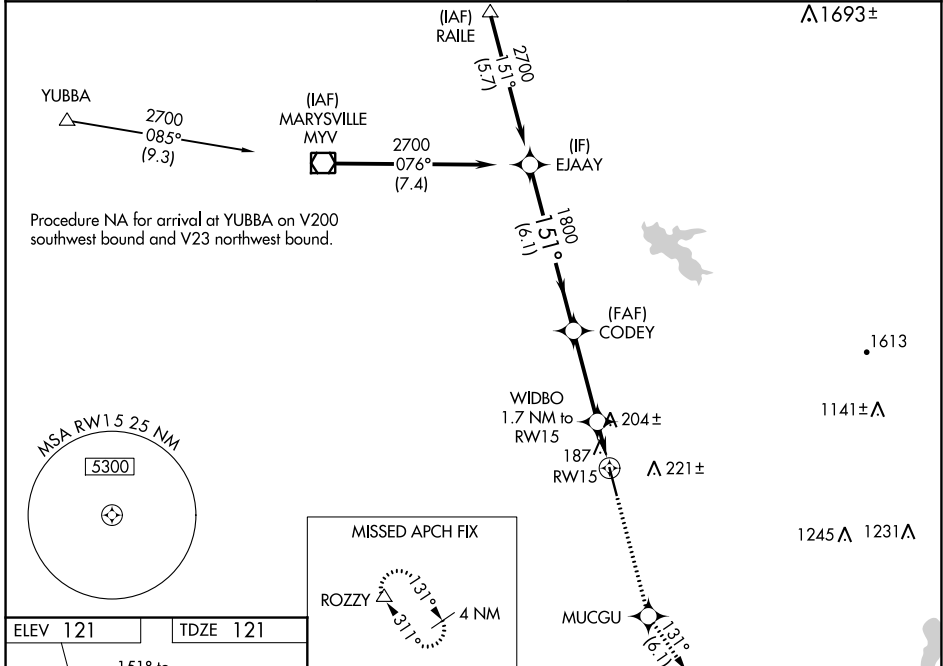
LINCOLN RGNL/KARL HARDER FLD (LHM)

RNP APCH

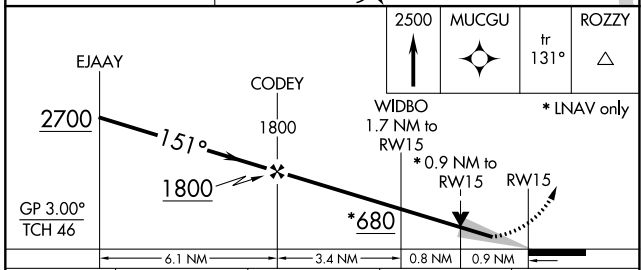
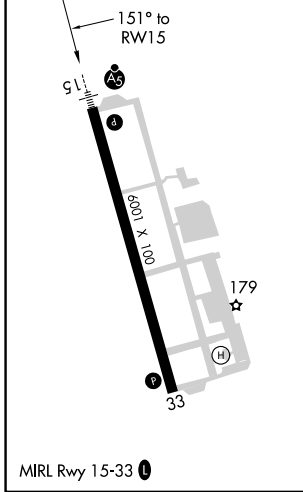
▼ For uncompensated Baro-VNAV systems, LNAV/VNAV NA below -15°C or above 48°C.  
 ▲ VDP and Baro-VNAV NA when using Beale AFB altimeter setting. When local altimeter setting not received, use Beale AFB altimeter setting and increase LPV DA to 361 feet; increase LNAV/VNAV DA to 492 feet; increase all MDAs 40 feet and increase Circling Cat D visibility ¼ SM. For inop ALS when using Beale AFB altimeter setting, increase LNAV Cat D visibility to 1¼.

MALSR MISSED APPROACH: Climb to 2500 direct MUCGU and on track 131° to ROZZY and hold.

AWOS-3 <b>124.25</b>	NORCAL APP CON <b>125.4 259.1</b>	UNICOM <b>123.0 (CTAF)</b>
-------------------------	--------------------------------------	-------------------------------



ELEV 121	TDZE 121
----------	----------



CATEGORY	A	B	C	D
LPV DA		321-½	200 (200-½)	
LNAV/VNAV DA		452-¾	331 (400-¾)	
LNAV MDA		460-½	339 (400-½)	460-1 339 (400-1)
CIRCLING	520-1 399 (400-1)	580-1 459 (500-1)	600-1½ 479 (500-1½)	760-2 639 (700-2)

SW-2, 28 NOV 2024 to 26 DEC 2024

SW-2, 28 NOV 2024 to 26 DEC 2024