

|             |          |             |
|-------------|----------|-------------|
| APP CRS     | Rwy Idg  | <b>3000</b> |
| <b>180°</b> | TDZE     | <b>137</b>  |
|             | Apt Elev | <b>137</b>  |

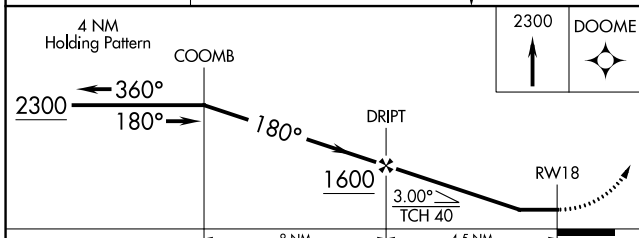
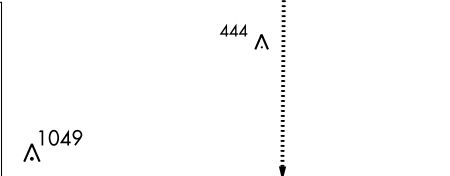
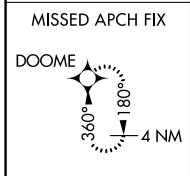
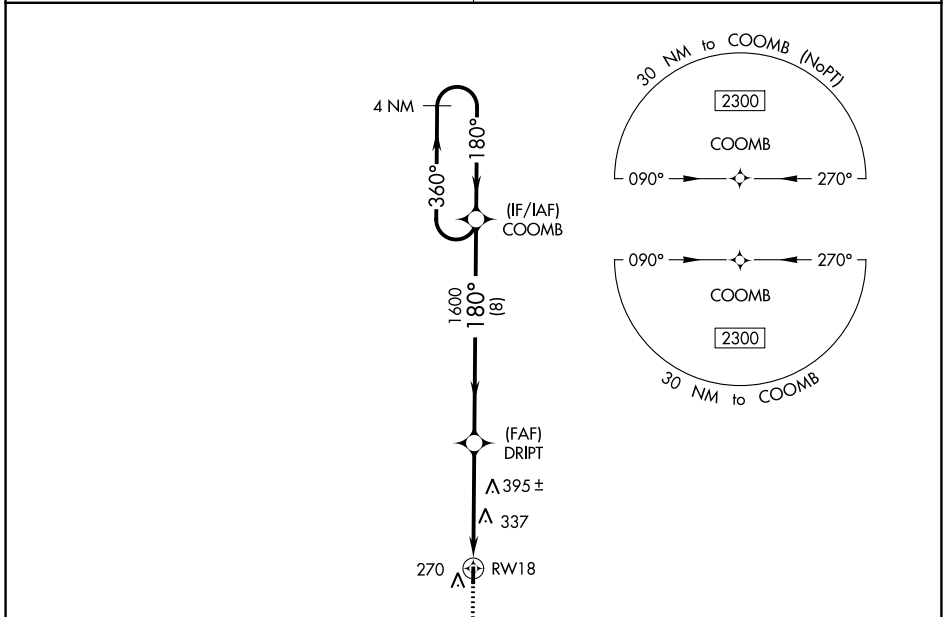
# RNAV (GPS) RWY 18

RULEVILLE-DREW (M37)

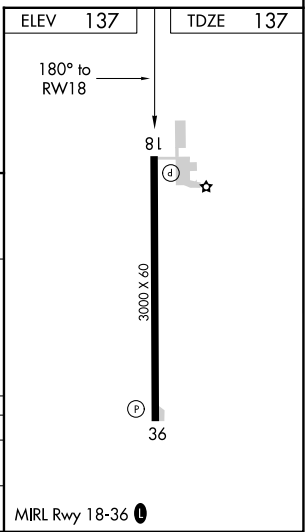
**▽** DME/DME RNP-0.3 NA. Use Cleveland altimeter setting; when not received, use Greenwood altimeter setting and increase all MDA 40 feet and increase LNAV and Circling Cat C visibility ¼ mile. Procedure NA at night. Helicopter visibility reduction below 1 SM NA.

**△** NA MISSED APPROACH: Climb to 2300 direct DOOME and hold.

|   |                      |
|---|----------------------|
| MEMPHIS CENTER<br><b>135.875 269.35</b> | CTAF<br><b>122.9</b> |
|---|----------------------|



| CATEGORY          | A                    | B                    | C                            | D  |
|-------------------|----------------------|----------------------|------------------------------|----|
| LNAV MDA          | 680-1                | 543 (600-1)          | 680-1 3/8<br>543 (600-1 3/8) | NA |
| <b>C</b> CIRCLING | 680-1<br>543 (600-1) | 720-1<br>583 (600-1) | 780-1 3/4<br>643 (700-1 3/4) | NA |



SC-4, 28 NOV 2024 to 26 DEC 2024

SC-4, 28 NOV 2024 to 26 DEC 2024