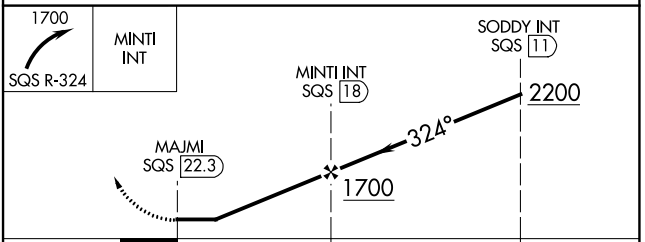
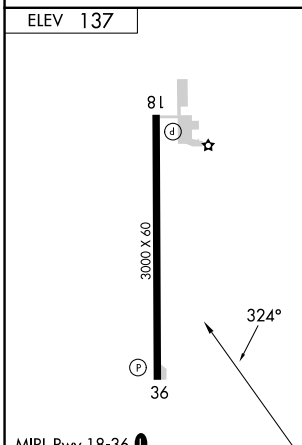
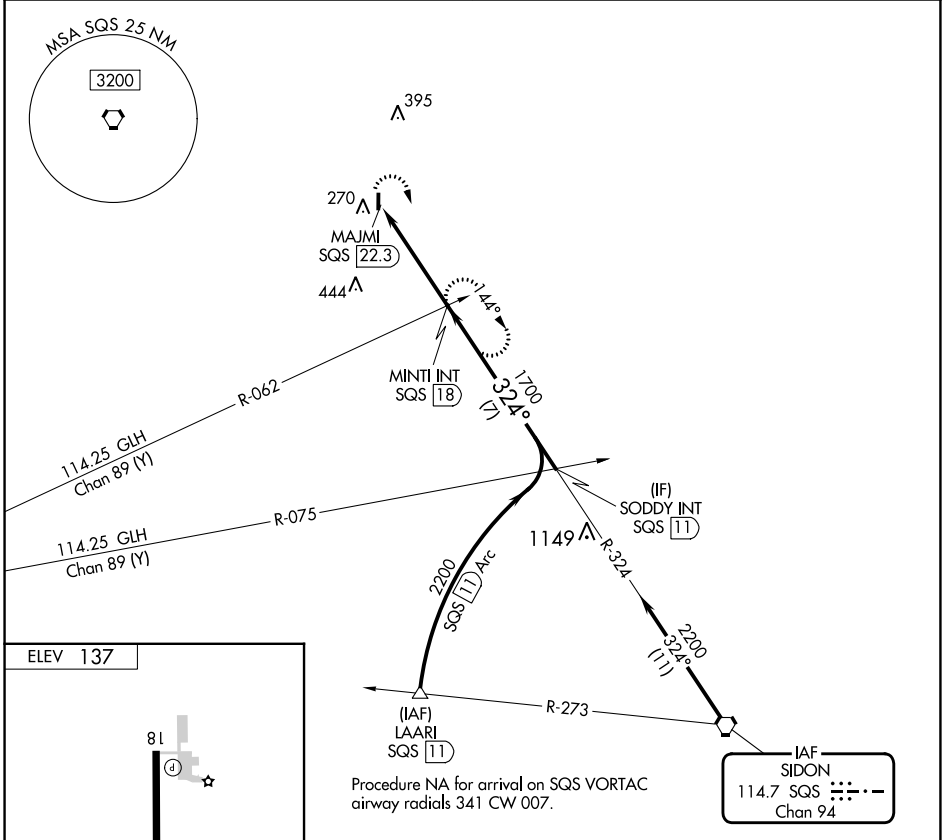


VORTAC SQS 114.7 Chan 94	APP CRS 324°	Rwy Idg TDZE Apt Elev	N/A N/A 137
--	------------------------	-----------------------------	--

VOR-A
RULEVILLE-DREW (M37)

▼ Rwy 18 and 36 helicopter visibility reduction below 1 SM NA. Use Cleveland altimeter setting; when not received, use Greenwood altimeter setting and increase all MDAs 40 feet, increase Cat C visibility 1/4 SM. Procedure NA at night.
▲ NA MISSED APPROACH: Climbing right turn to 1700 on SQS VORTAC R-324 to MINTI INT/SQS 18 DME and hold.

MEMPHIS CENTER 135.875 269.35	CTAF 122.9
---	----------------------



FAF to MAP 4.3 NM					
Knots	60	90	120	150	180
Min:Sec	4:18	2:52	2:09	1:43	1:26
☑ CIRCLING	A 620-1 483 (500-1)	B 720-1 583 (600-1)	C 780-1 ³ / ₄ 643 (700-1 ³ / ₄)	D NA	

SC-4, 28 NOV 2024 to 26 DEC 2024

SC-4, 28 NOV 2024 to 26 DEC 2024