

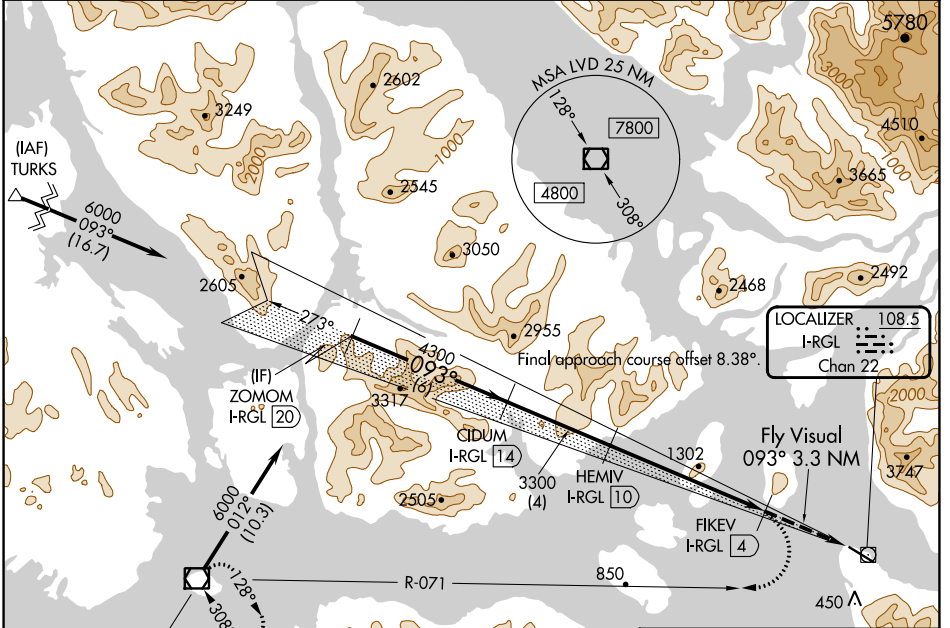
LOC/DME I-RGL 108.5 Chan 22	APP CRS 093°	Rwy Idg TDZE Apt Elev 44	N/A N/A 44
---	------------------------	---------------------------------------	-------------------------

LDA-D

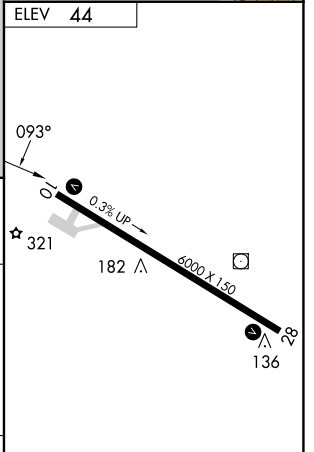
WRANGELL (WRG) (PAWG)

<p>Circling NA north of Rwy 10-28. DME Required. Any go-around commenced after passing the MAP will not provide standard obstacle clearance.</p>	<p>MISSED APPROACH: Climbing right turn to 6000 on LVD VOR/DME R-071 to LVD VOR/DME and hold.</p>

AWOS-3P 128.5	ANCHORAGE CENTER 118.0	SITKA RADIO 122.45	CTAF 122.6
-------------------------	----------------------------------	------------------------------	----------------------



ZOMOM I-RGL (20)	CIDUM I-RGL (14)	HEMIV I-RGL (10)	FIKEV I-RGL (4)
6000	4300	3300	450
6 NM	4 NM	6 NM	
Fly Visual 093°		Fly Visual 093° 3.3 NM	



CATEGORY	A	B	C	D
CIRCLING		NA		3260-3 3216 (3300-3)

REIL Rwys 10 and 28
HIRL Rwy 10-28

AK, 31 OCT 2024 to 26 DEC 2024

AK, 31 OCT 2024 to 26 DEC 2024