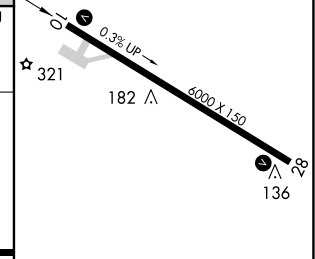
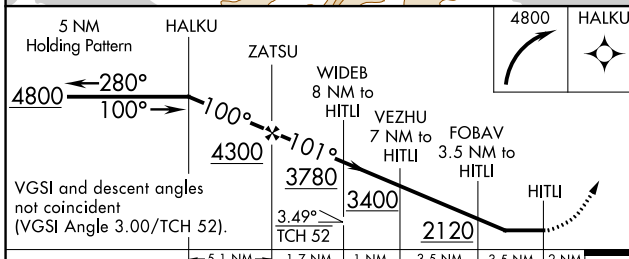
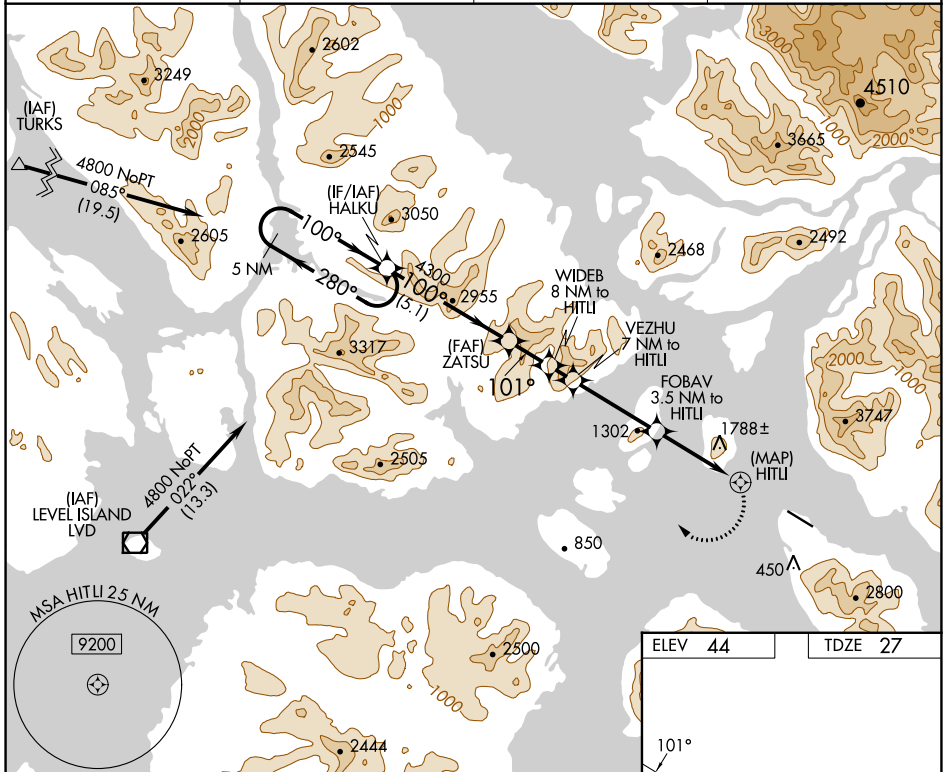


APP CRS	Rwy Idg	6000
101°	TDZE	27
	Apt Elev	44

RNAV (GPS) RWY 10

WRANGELL (WRG) (PAWG)

RNP APCH-GPS		MISSED APPROACH: Climbing right turn to 4800 direct HALKU and hold.	
⚠ Circling NA South of Rwy 10-28. ⚠ Procedure NA at night. ❄ -5°C Helicopter visibility reduction below 1 SM NA.			
AWOS-3P	ANCHORAGE CENTER	SITKA RADIO	CTAF
128.5	118.0	122.45	122.6



	ELEV 44		TDZE 27	
CATEGORY	A	B	C	D
RNAV MDA	2080-2½	2053 (2100-2½)	2080-3 2053 (2100-3)	NA
CIRCLING	2080-2½	2036 (2100-2½)	2500-3 2456 (2500-3)	NA

AK, 31 OCT 2024 to 26 DEC 2024

AK, 31 OCT 2024 to 26 DEC 2024