

(PITKN5.GLENO) 24137

PITKN FIVE DEPARTURE (RNAV)

ASPEN-PITKIN COUNTY/SARDY FLD (ASE)

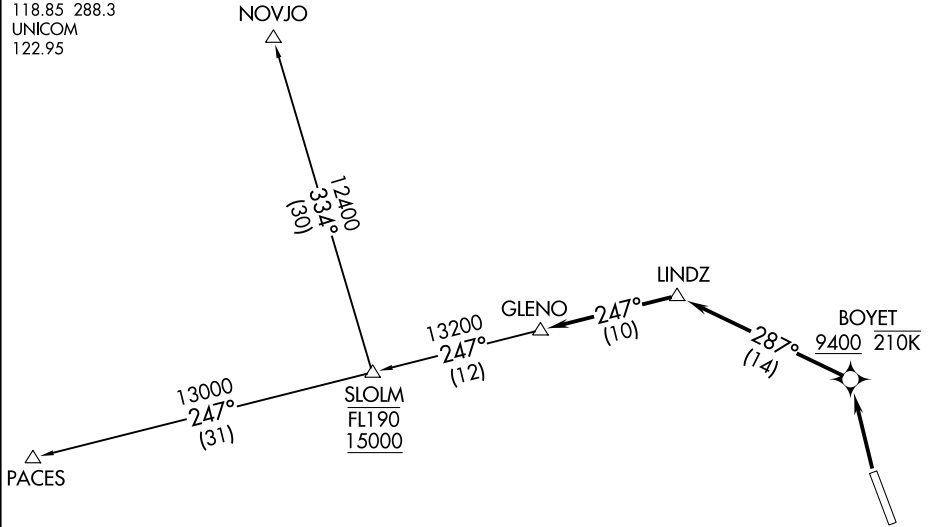
AL-5889 (FAA)

ASPEN, COLORADO

ASPEN DEP CON ★
 123.8 288.3
 DENVER CENTER
 119.85 363.15
 ATIS
 120.4
 CLNC DEL
 123.75
 GND CON
 121.9
 ASPEN TOWER ★
 118.85 288.3
 UNICOM
 122.95

RNAV 1 - GPS.

**TOP ALTITUDE:
16000**



TAKEOFF MINIMUMS

Rwy 15: NA - Environmental.

Rwy 33: 300-1 with minimum climb of 500'/NM to 11200.

NOTE: Chart not to scale.



DEPARTURE ROUTE DESCRIPTION

TAKEOFF RUNWAY 33: Climb direct BOYET to cross at or above 9400 and at or below 210K, then on track 287° to LINDZ, then on track 247° to GLENO, thence. . . .

. . . .on transition or assigned route, maintain 16000, expect clearance to filed altitude 10 minutes after departure.

NOVJO TRANSITION (PITKN5.NOVJO)

PACES TRANSITION (PITKN5.PACES)

PITKN FIVE DEPARTURE (RNAV)

(PITKN5.GLENO) 16MAY24

ASPEN, COLORADO

ASPEN-PITKIN COUNTY/SARDY FLD (ASE)

SW-1, 28 NOV 2024 to 26 DEC 2024

SW-1, 28 NOV 2024 to 26 DEC 2024