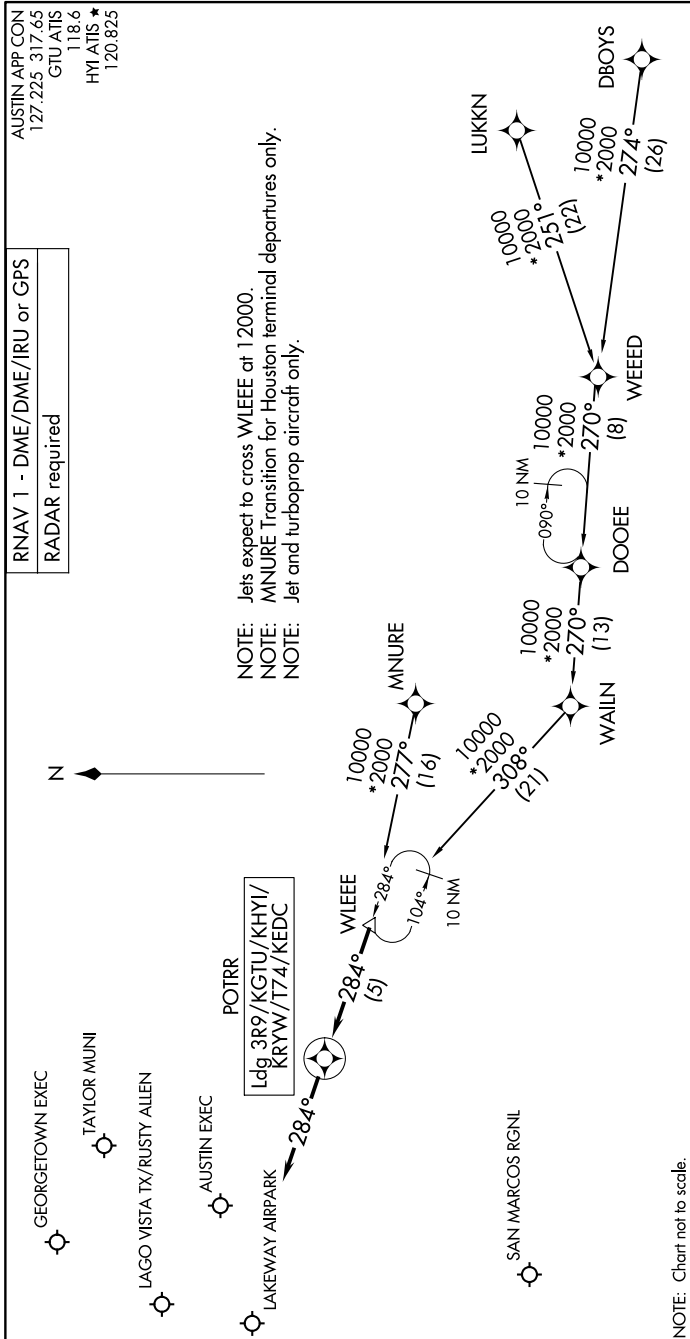


POTRR TWO ARRIVAL (RNAV)

AUSTIN, TEXAS

SC-3, 28 NOV 2024 to 26 DEC 2024



AUSTIN APP CON
127.225 317.65
GTU ATIS
118.6
HY ATIS *
120.825

RNAV 1 - DME/DME/IRU or GPS
RADAR required

NOTE: Jets expect to cross WLEEE at 12000.
NOTE: MNNURE Transition for Houston terminal departures only.
NOTE: Jet and turboprop aircraft only.

NOTE: Chart not to scale.

ARRIVAL ROUTE DESCRIPTION

- DBOYS TRANSITION (DBOYS.POTRR2)
- LUKKN TRANSITION (LUKKN.POTRR2)
- MNNURE TRANSITION (MNNURE.POTRR2)
- WEEED TRANSITION (WEEED.POTRR2)

LANDING ALL AIRPORTS: From WLEEE on track 284° to POTRR, then on track 284°. Expect RADAR vectors to final approach course.

POTRR TWO ARRIVAL (RNAV)

AUSTIN, TEXAS

SC-3, 28 NOV 2024 to 26 DEC 2024