

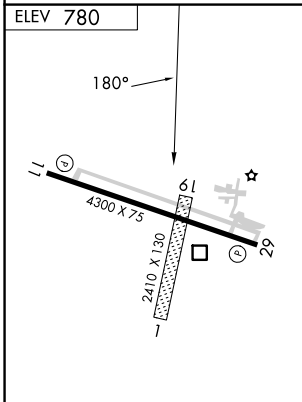
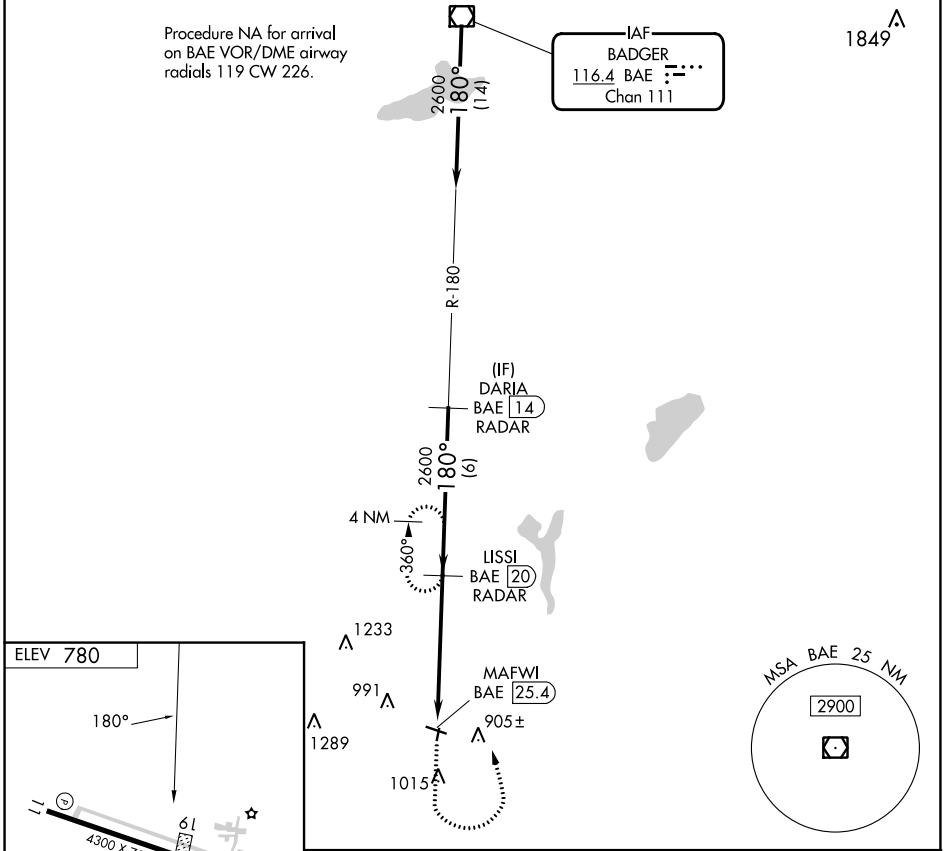
VOR/DME BAE	APP CRS	Rwy Idg	N/A
<b>116.4</b>	<b>180°</b>	TDZE	N/A
Chan <b>111</b>		Apt Elev	<b>780</b>

# VOR-A

BURLINGTON MUNI (BUU)

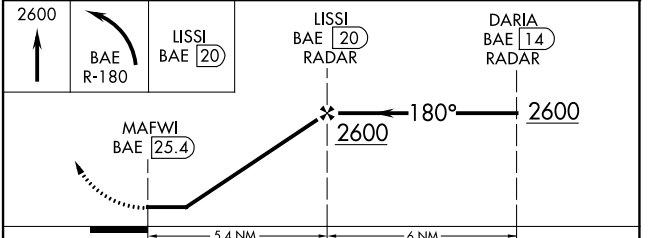
DME or RADAR required.		MISSED APPROACH: Climb to 2600 then left turn on BAE VOR/DME R-180 to LISSI/20 DME/RADAR and hold.	
Circling NA to Rwy 1 and 19.			

AWOS-3 <b>125.275</b>	MILWAUKEE APP CON <b>135.875 307.0</b>	GCO <b>121.725</b>	UNICOM <b>123.05 (CTAF) 0</b>
--------------------------	---	-----------------------	----------------------------------



MIRL Rwy 11-29  
REIL Rwy 11 and 29

FAF to MAP	5.4 NM				
Knots	60	90	120	150	180
Min:Sec	5:24	3:36	2:42	2:10	1:48



CATEGORY	A	B	C	D
CIRCLING	1400-1	620 (700-1)	1400-1¾ 620 (700-1¾)	1560-2½ 780 (800-2½)

EC-3, 28 NOV 2024 to 26 DEC 2024

EC-3, 28 NOV 2024 to 26 DEC 2024