

|  |                        |                             |                                       |
|--|------------------------|-----------------------------|---------------------------------------|
| WAAS<br>CH <b>93810</b><br><b>W23A</b> | APP CRS<br><b>225°</b> | Rwy Idg<br>TDZE<br>Apt Elev | <b>4800</b><br><b>37</b><br><b>37</b> |
|--|------------------------|-----------------------------|---------------------------------------|

# RNAV (GPS) RWY 23

WASHINGTON-WARREN (OCW)

RNP APCH-GPS.

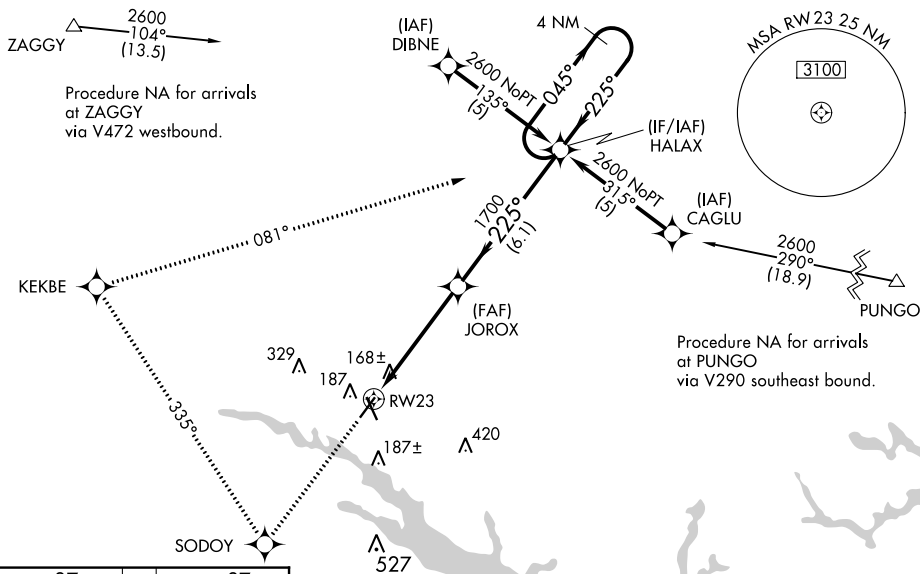
**⚠** Baro-VNAV and VDP NA when using Greenville altimeter setting. For uncompensated Baro-VNAV systems, LNAV/VNAV NA below -15°C or above 54°C. When local altimeter setting not received, use Greenville altimeter setting: increase LPV DA to 478 feet and visibility 1/4 SM, and LNAV/VNAV DA to 515 feet and visibility 1/8 SM; increase all MDAs 60 feet and visibility LNAV Cat C/D 1/4 SM. Circling Rwy 17 NA at night.

MISSED APPROACH: Climb to 2600 direct SODOY and right turn via 335° track to KEKBE and right turn via 081° track to HALAX and hold.

AWOS-3  
**120.175**

CHERRY POINT APP CON  
**119.35 377.175**

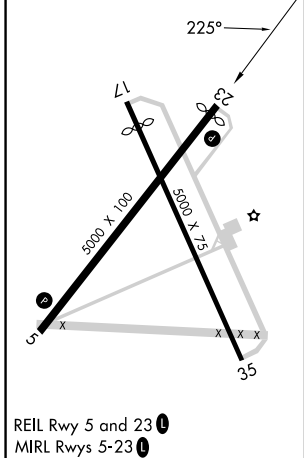
UNICOM  
**122.7 (CTAF) 0**



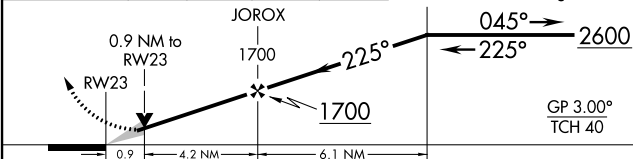
SE-2, 28 NOV 2024 to 26 DEC 2024

SE-2, 28 NOV 2024 to 26 DEC 2024

|         |         |
|---------|---------|
| ELEV 37 | TDZE 37 |
|---------|---------|



|      |       |        |        |   |
|------|-------|--------|--------|---|
| 2600 | SODOY | KEKBE  | HALAX  | VGSI and RNAV glidepath not coincident (VGSI Angle 3.75/TCH 45). 4 NM Holding Pattern |
| ↑    | ✧     | ↪ 335° | ↪ 081° |   |



| CATEGORY     | A                         | B           | C                            | D                            |
|--------------|---------------------------|-------------|------------------------------|------------------------------|
| LPV DA       | 436-1 3/8 399 (400-1 1/8) |             |                              |                              |
| LNAV/VNAV DA | 473-1 1/4 436 (500-1 1/4) |             |                              |                              |
| LNAV MDA     | 420-1                     | 383 (400-1) | 420-1 1/8                    | 383 (400-1 1/8)              |
| CIRCLING     | 540-1                     | 503 (600-1) | 640-1 3/4<br>603 (700-1 1/4) | 780-2 1/2<br>743 (800-2 1/2) |