

(FRSBE2.FRSBE) 23110

AL-5942 (FAA)

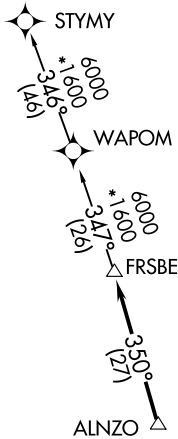
# FRSBE TWO DEPARTURE (RNAV)

FORT LAUDERDALE EXEC (FXE)  
FORT LAUDERDALE, FLORIDA

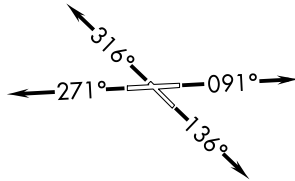
**TOP ALTITUDE:  
ASSIGNED BY ATC**

RNAV 1-DME/DME IRU or GPS.  
RADAR required.

ATIS  
119.85  
CLNC DEL  
127.95  
GND CON  
121.75  
EXECUTIVE TOWER  
120.9 239.3  
MIAMI DEP CON  
126.05 251.1



**TAKEOFF MINIMUMS**  
Rwys 9, 13, 31: Standard.  
Rwy 27: Standard with minimum  
climb of 227' per NM to 600.



- NOTE: Jet aircraft only.
- NOTE: Accelerate to 250K, if unable, advise ATC.
- NOTE: WAPOM Transition for KMCO, KDAB, and KMLB area arrivals.

NOTE: Chart not to scale.

## DEPARTURE ROUTE DESCRIPTION

- TAKEOFF RUNWAY 9:** Climb on heading 091° or as assigned by ATC for RADAR vectors to ALNZO, thence...
- TAKEOFF RUNWAY 13:** Climb on heading 136° or as assigned by ATC for RADAR vectors to ALNZO, thence...
- TAKEOFF RUNWAY 27:** Climb on heading 271° or as assigned by ATC for RADAR vectors to ALNZO, thence...
- TAKEOFF RUNWAY 31:** Climb on heading 316° or as assigned by ATC for RADAR vectors to ALNZO, thence...

... on track 350° to FRSBE, then on (transition). Maintatin ATC assigned altitude, expect filed altitude 10 minutes after departure.

STYMY TRANSITION (FRSBE2.STYMY)  
WAPOM TRANSITION (FRSBE2.WAPOM)

**FRSBE TWO DEPARTURE (RNAV)**  
(FRSBE2.FRSBE) 20APR23

FORT LAUDERDALE, FLORIDA  
FORT LAUDERDALE EXEC (FXE)

SE-3, 28 NOV 2024 to 26 DEC 2024

SE-3, 28 NOV 2024 to 26 DEC 2024