

APP CRS	Rwy Idg	4687
355°	TDZE	719
	Apf Elev	719

RNAV (GPS) RWY 35

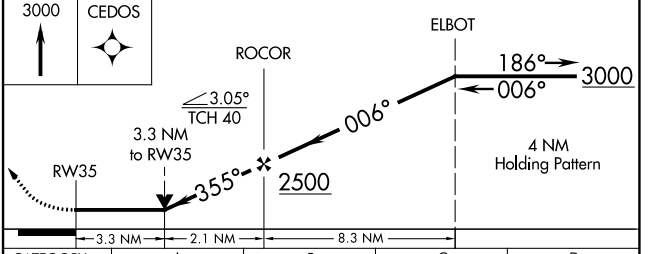
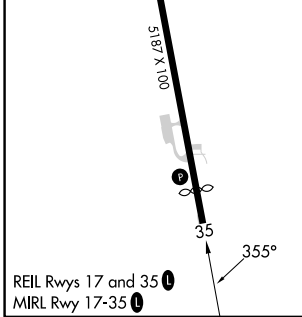
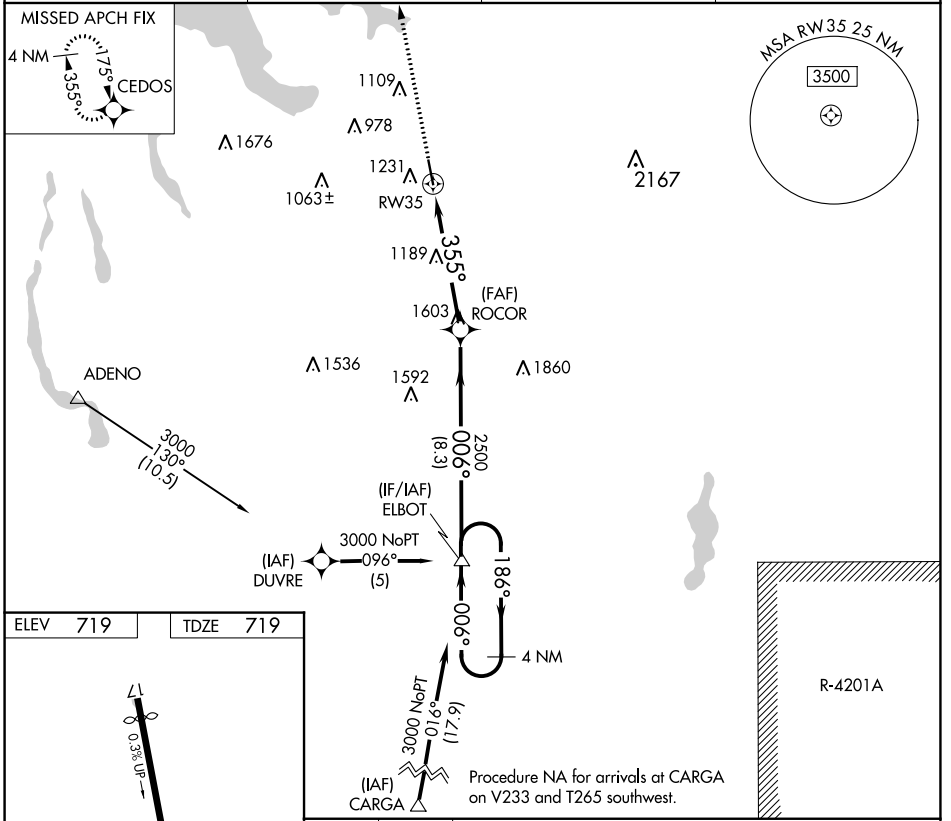
BOYNE MOUNTAIN (BFA)

RNP APCH - GPS.

⚠ When local altimeter setting not received, use Bellaire altimeter setting.
 ⚠ NA Procedure NA at night. Rwy 35 helicopter visibility reduction below 1 SM NA. VDP NA when using Bellaire altimeter setting.

MISSED APPROACH: Climb to 3000 direct CEDOS and hold.

AWOS-3PT 118.675	MINNEAPOLIS CENTER 134.6 354.05	UNICOM 122.8 (CTAF)	122.85 📶
----------------------------	---	-------------------------------	-----------------



CATEGORY	A	B	C	D
LNAV MDA	1840-1¼ 1121 (1200-1¼)	1840-1½ 1121 (1200-1½)	1840-3	1121 (1200-3)

EC-1, 28 NOV 2024 to 26 DEC 2024

EC-1, 28 NOV 2024 to 26 DEC 2024