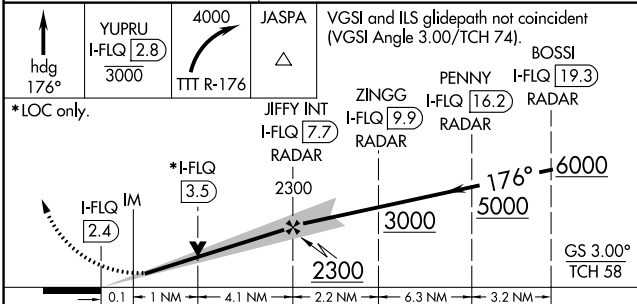
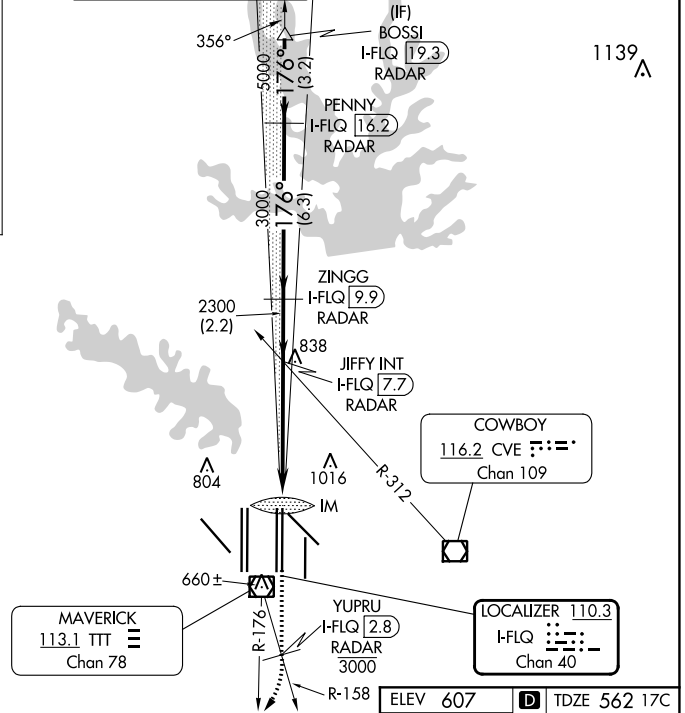
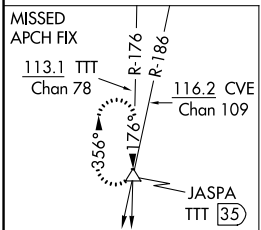
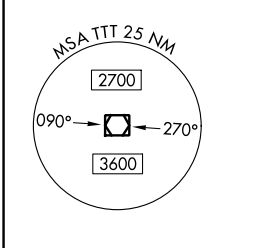
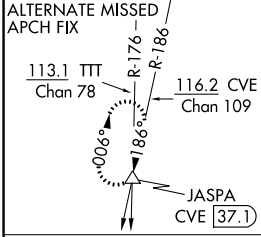


LOC/DME I-FLQ	APP CRS	Rwy Idg	17C	17R
110.3	176°	TDZE	13400	13400
Chan 40		Apt Elev	562	567
			607	607

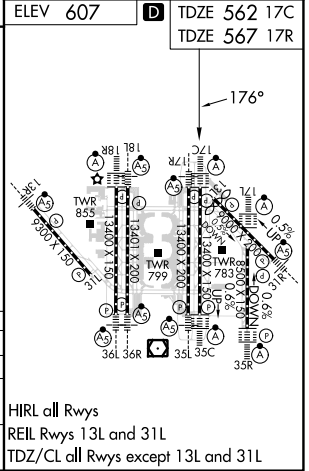
ILS or LOC RWY 17C

DALLAS-FORT WORTH INTL (DFW)

DME and RADAR required.		Rwy 17C ALSF-2	Rwy 17R MALSR	MISSED APPROACH: Climb on heading 176° to cross YUPRU/2.8 DME/RADAR at or below 3000, then climbing right turn to 4000 on TTT VOR/DME R-176 to JASPA/TTT 35 DME and hold.		
D-ATIS ARR 123.775 DEP 135.925	LONE STAR APP CON 127.075	DFW TOWER		GND CON	CLNC DEL	CPDLC
		126.55	127.5 EAST	121.65	121.8 EAST	
		124.15	134.9 WEST	121.85	WEST	



CATEGORY	A	B	C	D
S-ILS 17C	762/18		200 (200-1/2)	
S-LOC 17C	1000/24	438 (400-1/2)	1000/40	438 (400-3/4)
SIDESTEP 17R	1140/55 573 (600-1)		1140-1 1/2 573 (600-1 1/2)	



SC-2, 28 NOV 2024 to 26 DEC 2024

SC-2, 28 NOV 2024 to 26 DEC 2024