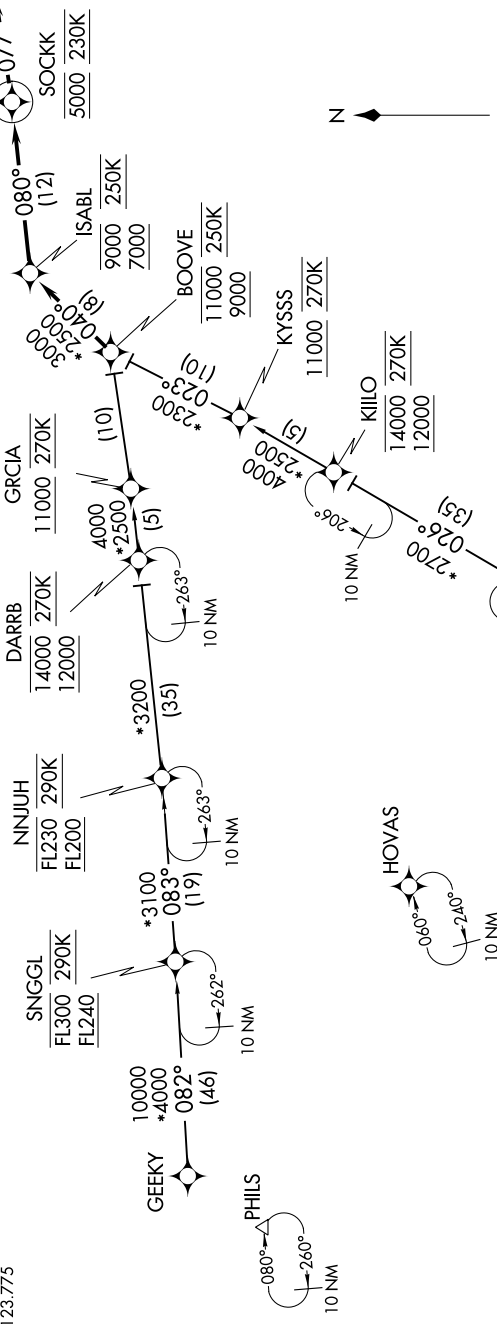


SOCKK FOUR ARRIVAL (RNAV)

SC-2, 28 NOV 2024 to 26 DEC 2024

LONE STAR APP CON
119.875 133.625 284.65
D-ATIS ARR
123.775



- NOTE: RADAR required.
- NOTE: RNAV 1.
- NOTE: DME/DME/IRU or GPS required.
- NOTE: Turbojet aircraft only.
- NOTE: For use when DFW is operating in a north flow. When DFW is operating in a south flow, file and expect the BOOVE RNAV STAR.
- NOTE: SNGLL Transition: For ABI Terminal area departures only.
- NOTE: KILLO Transition: For ACT and GRK Terminal area departures only.

NOTE: Chart not to scale.

ARRIVAL ROUTE DESCRIPTION

GEEKY TRANSITION (GEEKY.SOCKK4)
 GUTZZ TRANSITION (GUTZZ.SOCKK4)
 KILLO TRANSITION (KILLO.SOCKK4)
 SNGLL TRANSITION (SNGLL.SOCKK4)

From BOOVE on track 040° to cross ISABL between 7000 and 9000 and at 250K, then on track 080° to cross SOCKK at 5000 and at 230K, then on track 077°. Expect RADAR vectors to final approach course.

SOCKK FOUR ARRIVAL (RNAV)

SC-2, 28 NOV 2024 to 26 DEC 2024