

BORRN SIX DEPARTURE (RNAV)

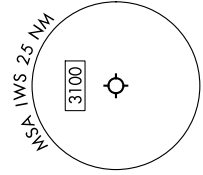
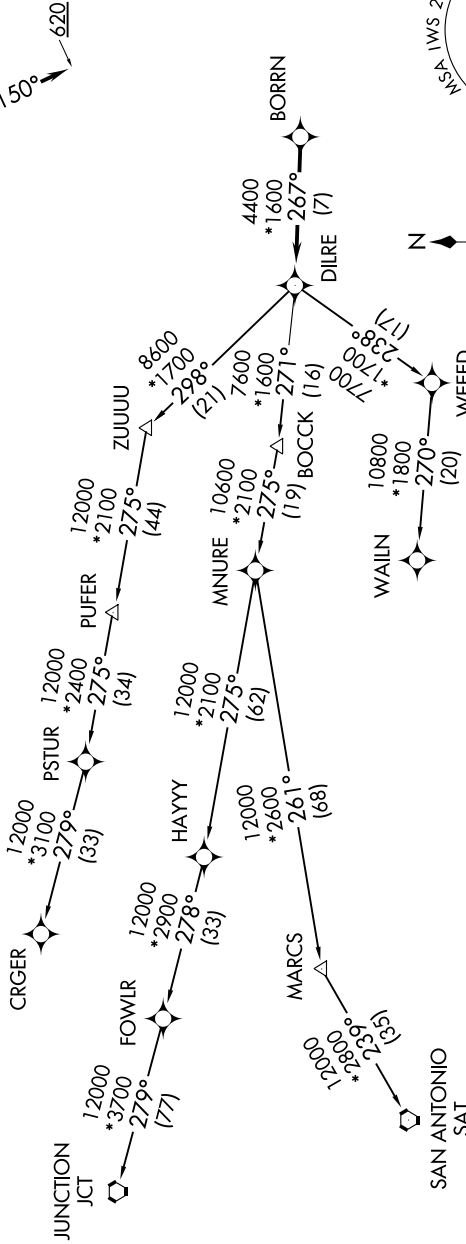
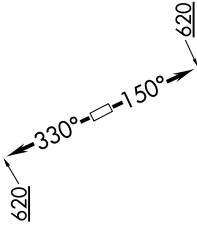
SC-5, 28 NOV 2024 to 26 DEC 2024

CTIAF
123.05
CLNC DEL
121.15
HOUSTON DEP CON
123.8 257.7

TAKEOFF MINIMUMS
Rwy 15, 33: Standard with minimum
climb of 500'/NM to 620.

RNAV 1 - DME/DME/IRU or GPS.
RADAR required.

TOP ALTITUDE:
ASSIGNED BY ATC



NOTE: Chart not to scale.

NOTE: CRGR-TRANSITION ATC assigned only
for aircraft departing 54T, AXH, EFD, GLS,
HPY, IWS, LBX, LVJ, SGR, TME, T00, T41.

(NARRATIVE ON FOLLOWING PAGE)

SC-5, 28 NOV 2024 to 26 DEC 2024

BORRN SIX DEPARTURE (RNAV)