

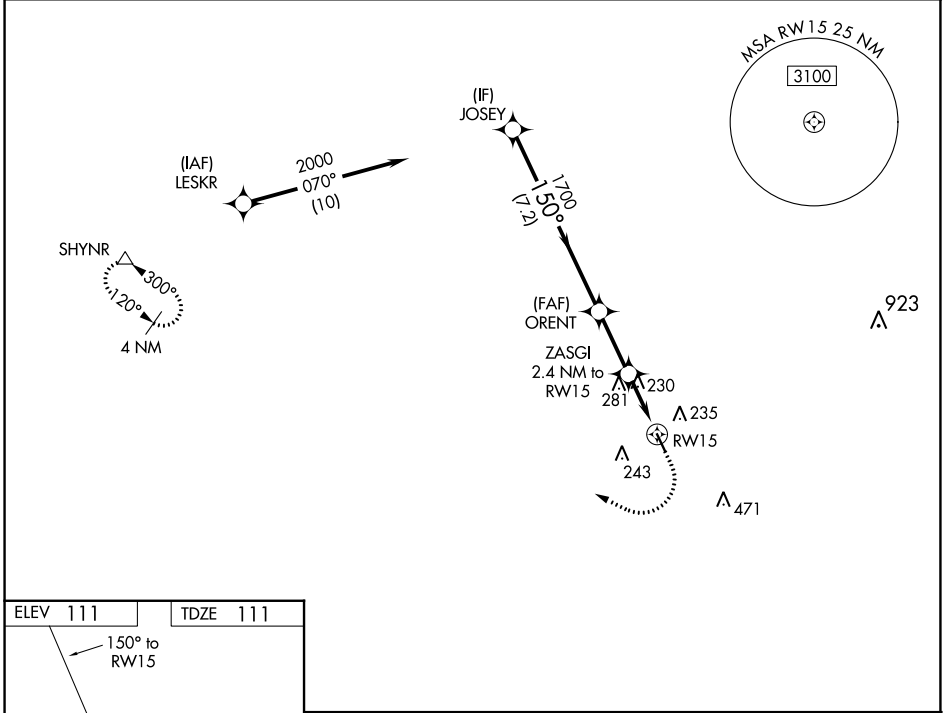
WAAS CH 40429 W15A	APP CRS 150°	Rwy Idg TDZE Apt Elev	3953 111 111
--	------------------------	-----------------------------	---

RNAV (GPS) RWY 15

WEST HOUSTON (IWS)

RNP APCH.	MISSED APPROACH: Climb to 600 then climbing right turn to 2000 direct SHYNR and hold.
Procedure NA at night. Rwy 15 helicopter visibility reduction below 1 SM NA. Use George Bush Intcntl/Houston altimeter setting.	

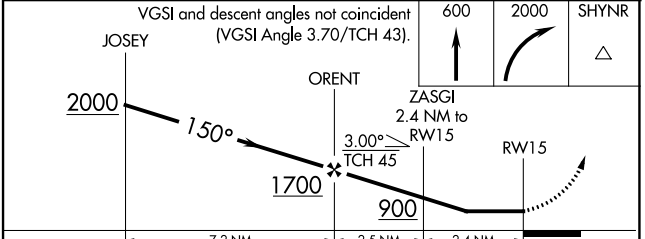
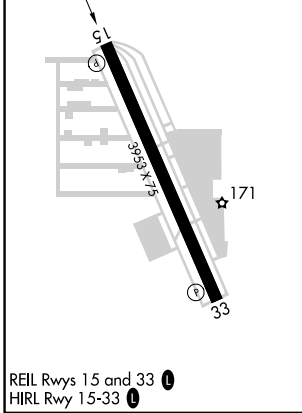
HOUSTON APP CON 123.8 257.7	CLNC DEL 121.15	UNICOM 123.05 (CTAF) 0
---------------------------------------	---------------------------	----------------------------------



SC-5, 28 NOV 2024 to 26 DEC 2024

SC-5, 28 NOV 2024 to 26 DEC 2024

ELEV 111	TDZE 111
----------	----------



CATEGORY	A	B	C	D
LP MDA	540-1	429 (500-1)	540-1¼ 429 (500-1¼)	NA
LNAV MDA	580-1	469 (500-1)	580-1¾ 469 (500-1¾)	NA
CIRCLING	600-1 489 (500-1)	640-1 529 (600-1)	800-2 689 (700-2)	NA