

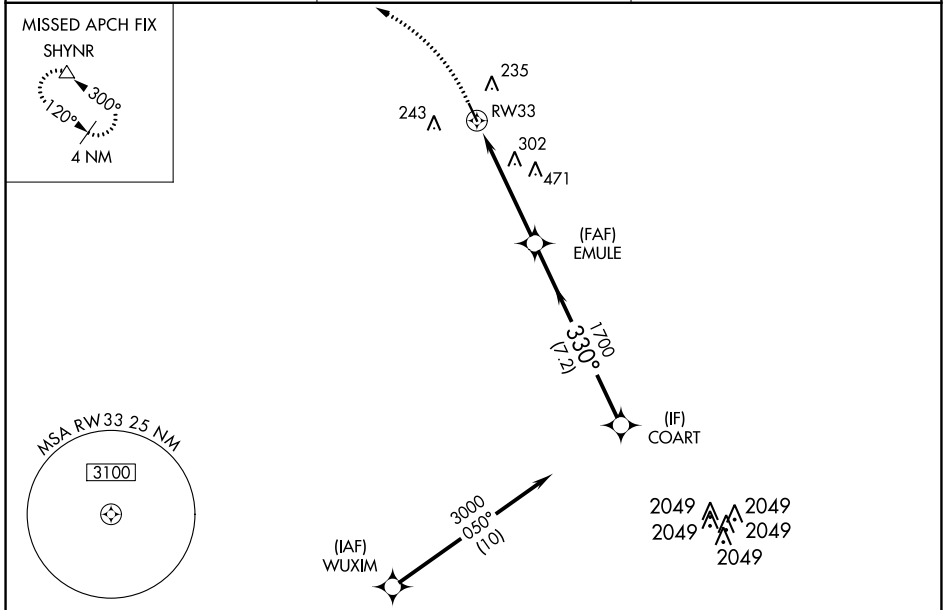
APP CRS	Rwy Idg	<b>3953</b>
<b>330°</b>	TDZE	<b>111</b>
	Apt Elev	<b>111</b>

# RNAV (GPS) RWY 33

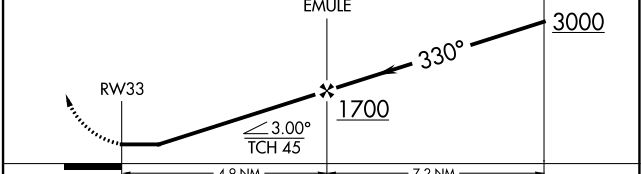
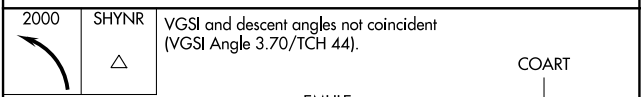
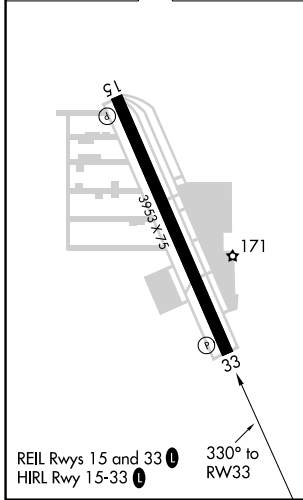
WEST HOUSTON (IWS)

RNP APCH.	MISSED APPROACH: Climbing left turn to 2000 direct SHYNR and hold.
Rwy 33 helicopter visibility reduction below 1 SM NA. Use George Bush Intcnl/Houston altimeter setting. Circling Rwy 15 NA at night.	

HOUSTON APP CON <b>123.8 257.7</b>	CLNC DEL <b>121.15</b>	UNICOM <b>123.05 (CTAF) 0</b>
---------------------------------------	---------------------------	----------------------------------



ELEV 111	TDZE 111
----------	----------



CATEGORY	A	B	C	D
LNAV MDA	600-1	489 (500-1)	600-1 3/8 489 (500-1 3/8)	NA
CIRCLING	600-1 489 (500-1)	640-1 529 (600-1)	800-2 689 (700-2)	NA

SC-5, 28 NOV 2024 to 26 DEC 2024

SC-5, 28 NOV 2024 to 26 DEC 2024