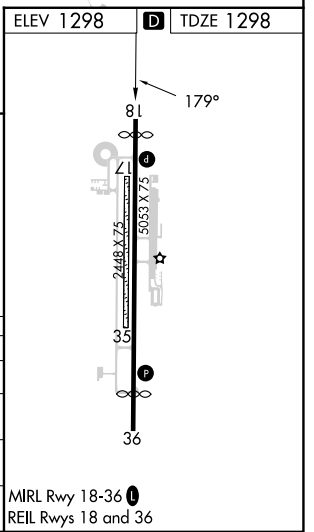
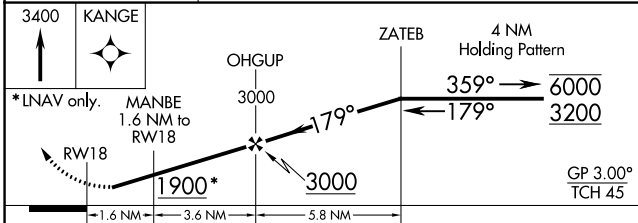
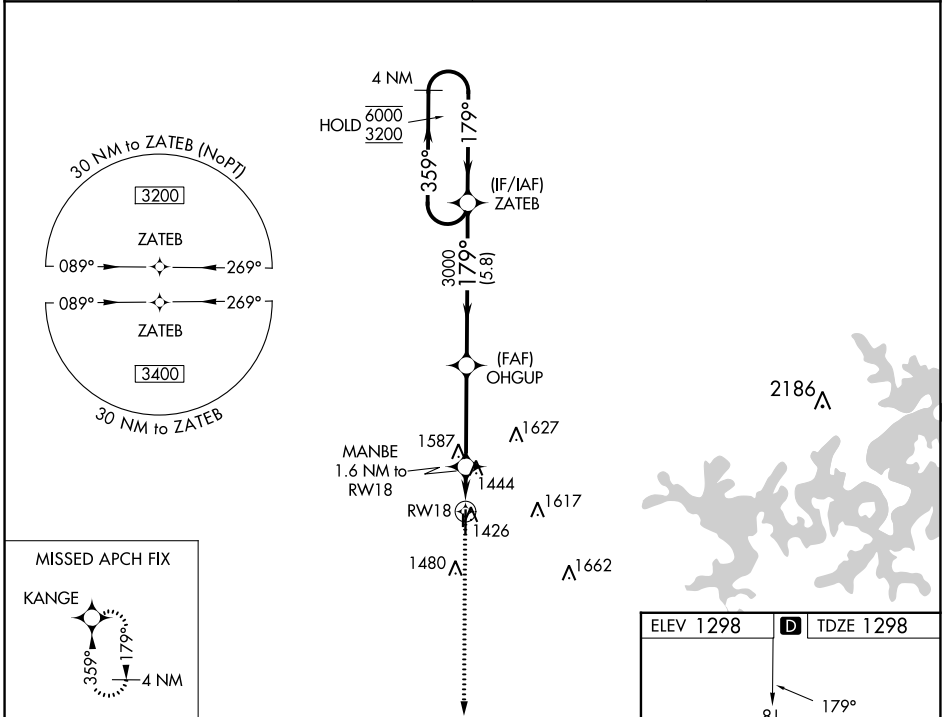


WAAS CH <b>77830</b> <b>W18A</b>	APP CRS <b>179°</b>	Rwy Idg TDZE <b>1298</b> Apt Elev <b>1298</b>	<b>4196</b>
--	------------------------	---	-------------

# RNAV (GPS) RWY 18

BENTONVILLE MUNI/LOUISE M THADEN FLD (VBT)

RNP APCH.		MISSED APPROACH: Climb to 3400 direct KANGE and hold.	
<p><b>⚠</b> Circling NA to Rwy 17 and 35. Rwy 18 helicopter visibility reduction below 3/4 SM NA. For uncompensated Baro-VNAV systems, LNAV/VNAV NA below -17°C or above 54°C.</p>			
AWOS-3PT <b>134.975</b>	RAZORBACK APP CON ★ <b>121.0 (WEST) 244.575</b>	CLNC DEL <b>121.05 263.125</b>	UNICOM <b>122.975 (CTAF)</b> <b>📻</b>



CATEGORY	A	B	C	D
LPV DA	1548-1		250 (300-1)	
LNAV/VNAV DA	1688-1 1/8		390 (400-1 1/8)	
LNAV MDA	1700-1 402 (500-1)		1700-1 1/8 402 (500-1 1/8)	
<b>📻</b> CIRCLING	1780-1 482 (500-1)		1920-1 3/4 622 (700-1 3/4) 1940-2 642 (700-2)	

# RNAV (GPS) RWY 18

SC-1, 28 NOV 2024 to 26 DEC 2024

SC-1, 28 NOV 2024 to 26 DEC 2024