

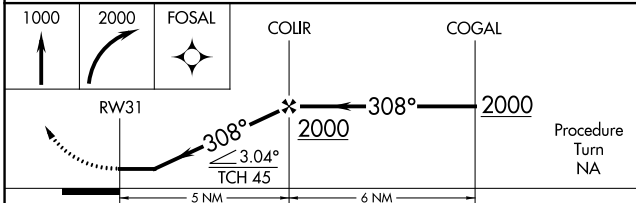
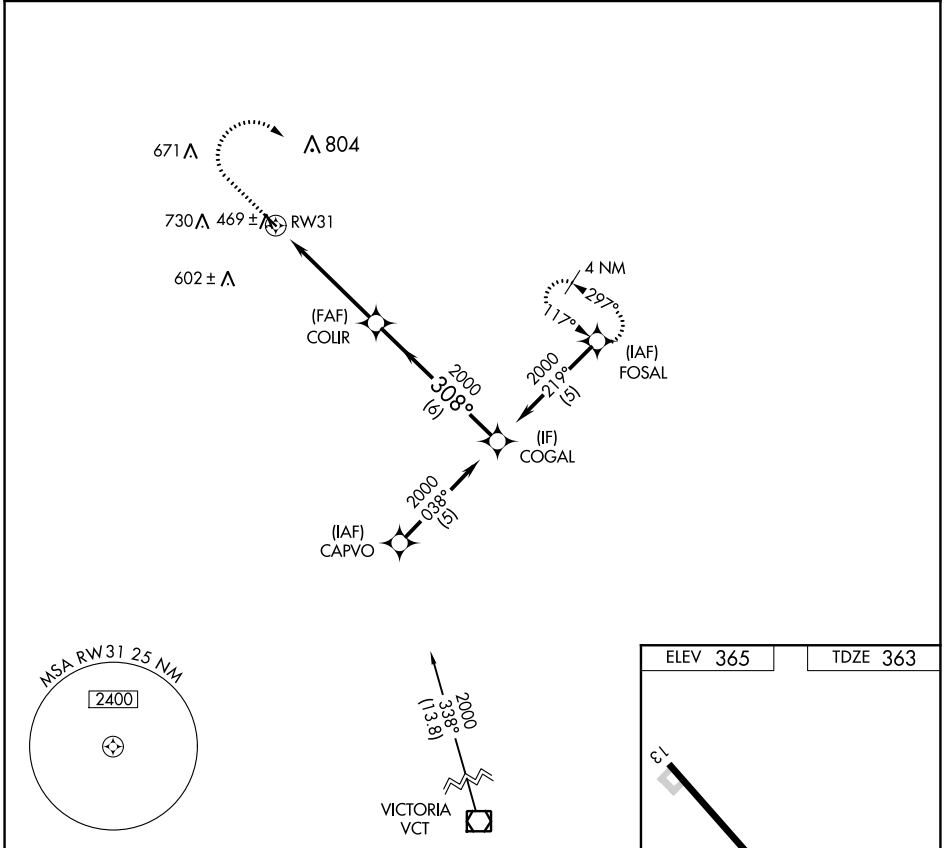
APP CRS	Rwy Idg	<b>3444</b>
<b>308°</b>	TDZE	<b>363</b>
	Apt Elev	<b>365</b>

# RNAV (GPS) RWY 31

YOAKUM MUNI (T85)

RNP APCH-GPS.	MISSED APPROACH: Climb to 1000 then climbing right turn to 2000 direct FOSAL and hold.
▼ Use Victoria Rgnl altimeter setting. Procedure NA at night.	
▲ NA Rwy 31 helicopter visibility reduction below 3/4 SM NA.	

VCT ASOS <b>119.025</b>	HOUSTON CENTER <b>132.8 343.7</b>	CTAF <b>122.9</b>
----------------------------	--------------------------------------	----------------------



CATEGORY	A	B	C	D
LNVA MDA	840-1 477 (500-1)		840-1 1/4 477 (500-1 1/4)	NA
CIRCLING	920-1 555 (600-1)		1200-2 1/2 835 (900-2 1/2)	NA

