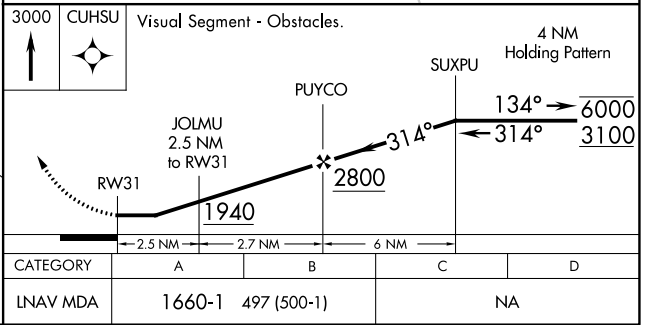
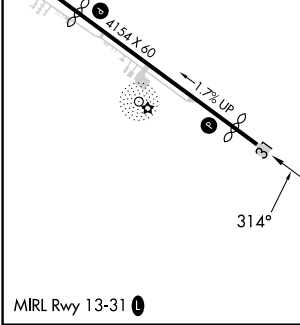
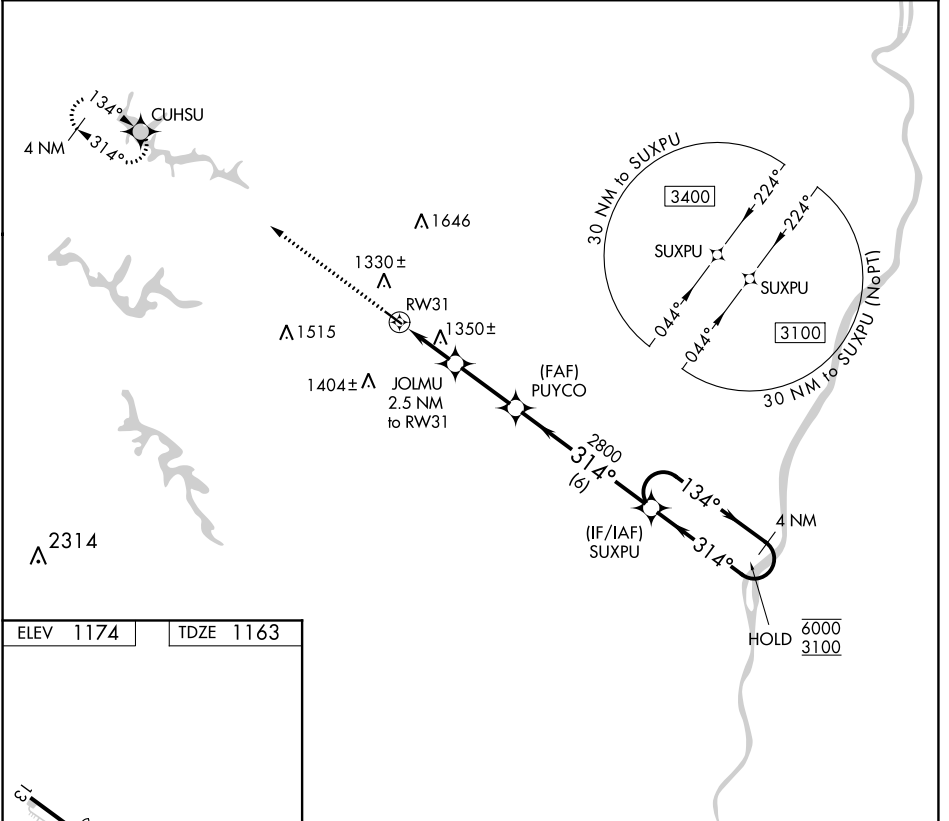


APP CRS	Rwy Idg	3744
314°	TDZE	1163
	Apt Elev	1174

RNAV (GPS) RWY 31

HARRISON COUNTY (8G6)

RNP APCH.		MISSED APPROACH: Climb to 3000 direct CUHSU and hold.
▼	Rwy 31 helicopter visibility reduction below 1 SM NA. Use Wheeling altimeter setting; when not received, use Washington altimeter setting and increase all MDA 40 feet. Procedure NA at night.	
▲ NA		
HLG ASOS	CLEVELAND CENTER	UNICOM
127.375	126.95 239.30	122.8 (CTAF) 0



EC-2, 28 NOV 2024 to 26 DEC 2024

EC-2, 28 NOV 2024 to 26 DEC 2024