

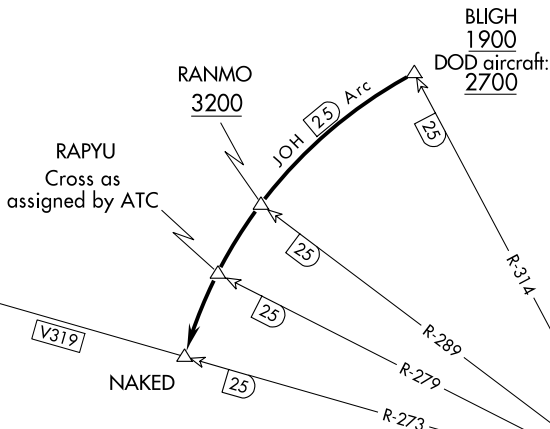
(NAKED6.NAKED) 23334  
NAKED SIX DEPARTURE

AL-6213 (FAA)

VALDEZ PIONEER FLD (VDZ) (PAVD)  
VALDEZ, ALASKA

ANCHORAGE CENTER  
119.3 269.4  
JUNEAU RADIO  
122.2  
CTAF  
122.9

**TOP ALTITUDE:  
ASSIGNED BY ATC**



TAKEOFF MINIMUMS  
Rwy 6, 24: 2000-3 (DOD aircraft 3500-3)  
NA at night.

JOHNSTONE POINT  
116.7 JOH  
Chan 114

NOTE: Do not proceed CCW beyond BLIGH without ATC clearance.  
NOTE: DME required.

NOTE: Chart not to scale.

**DEPARTURE ROUTE DESCRIPTION**

Proceed in visual conditions from Valdez airport to BLIGH (JOH R-314/25 DME) to cross BLIGH at or above 1900' (visual conditions must be maintained from takeoff until established over BLIGH at or above 1900') (DOD aircraft: Cross BLIGH at or above 2700'). Proceed CCW on JOH 25 DME arc to NAKED; cross RANMO at or above 3200'. Cross RAPYU as assigned by ATC. Thence via (assigned route).

NAKED SIX DEPARTURE  
(NAKED6.NAKED) 21JUL16

VALDEZ, ALASKA  
VALDEZ PIONEER FLD (VDZ) (PAVD)

AK, 31 OCT 2024 to 26 DEC 2024

AK, 31 OCT 2024 to 26 DEC 2024