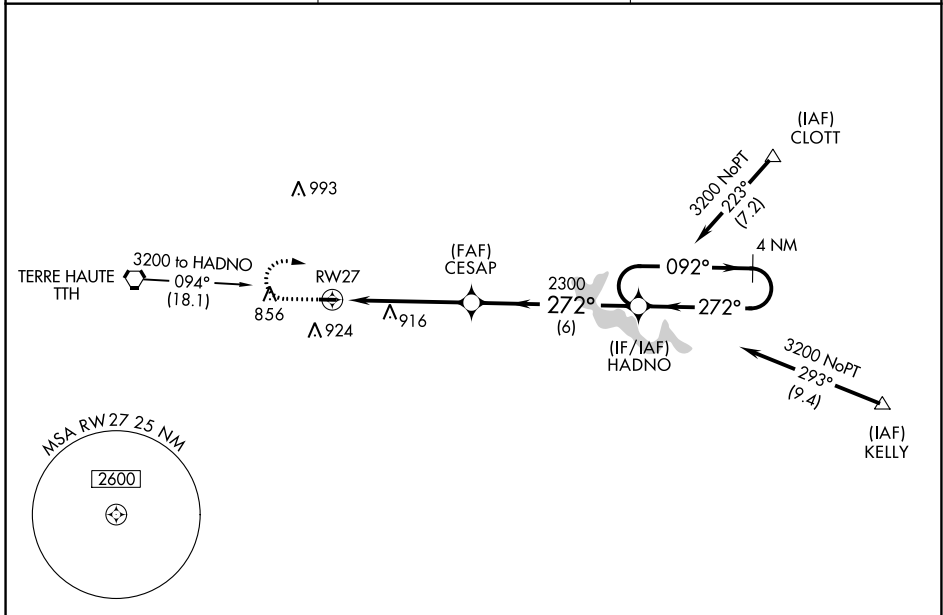


| | | |
|------------------------|-----------------------------|---|
| APP CRS 272° | Rwy Idg TDZE Apt Elev | 2499 645 645 |
|------------------------|-----------------------------|---|

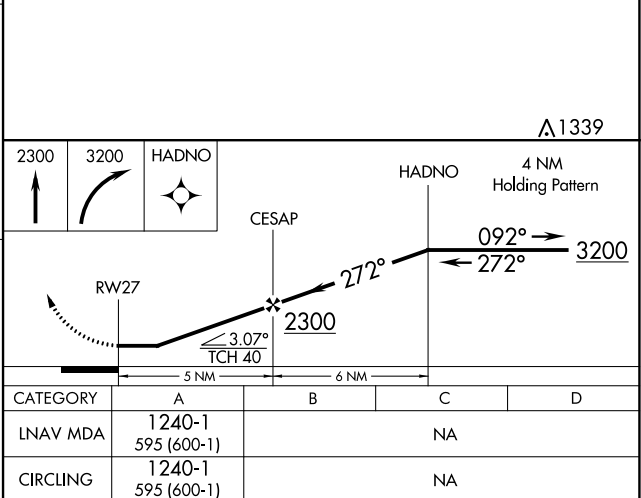
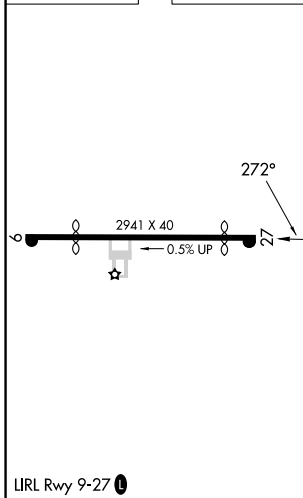
RNAV (GPS) RWY 27

BRAZIL CLAY COUNTY (ØI2)

| | | | |
|--|--|---|---------------------------------|
| RNP APCH - GPS. | | MISSED APPROACH: Climb to 2300 then dimbing right turn to 3200 direct HADNO and hold. | |
| ▼ Use HUF altimeter setting. Procedure NA at night. ▲ NA Helicopter visibility reduction below 1 SM NA. | | HULMAN APP CON 125.45 339.8 | UNICOM 122.8 (CTAF) Ø |
| HUF ASOS 127.5 | | | |



| | |
|----------|----------|
| ELEV 645 | TDZE 645 |
|----------|----------|



EC-2, 28 NOV 2024 to 26 DEC 2024

EC-2, 28 NOV 2024 to 26 DEC 2024