

| | | | |
|---------------------------------|------------------------|-----------------------------|---|
| WAAS CH 86230 W26A | APP CRS 261° | Rwy Idg TDZE Apt Elev | 4601 836 836 |
|---------------------------------|------------------------|-----------------------------|---|

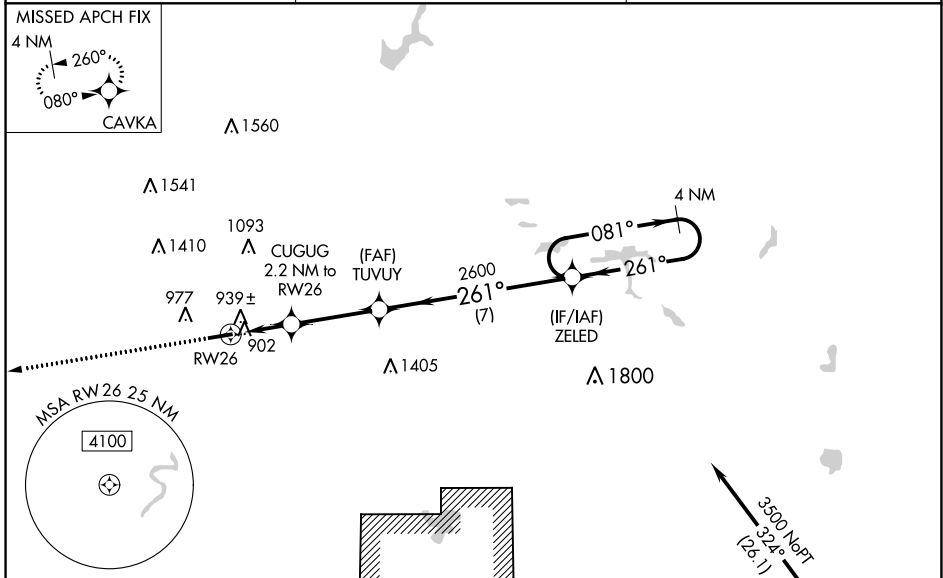
RNAV (GPS) RWY 26

BLACK RIVER FALLS AREA (BCK)

⚠ For uncompensated Baro-VNAV systems, LNAV/VNAV NA below -16°C (4°F) or above 38°C (100°F). Baro-VNAV and VDP NA when using La Crosse altimeter setting. Rwy 26 helicopter visibility reduction below 3/4 SM NA. DME/DME RNP-0.3 NA. When local altimeter setting not received, use La Crosse altimeter setting: increase LPV DA to 1178 feet and visibility all Cats 1/8 SM; increase LNAV/VNAV DA to 1211 feet and visibility all Cats 1/4 SM; increase all MDA 100 feet and visibility LNAV Cat C and D 3/8 SM and Circling Cat C 1/4 SM.

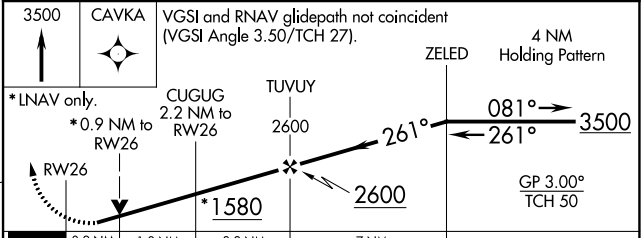
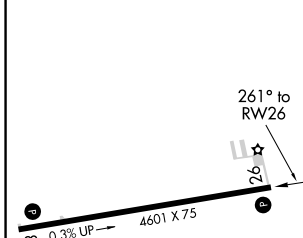
MISSED APPROACH:
Climb to 3500 direct CAVKA and hold.

| | | |
|----------------------------|--|----------------------|
| AWOS-3PT 119.125 | MINNEAPOLIS CENTER 128.6 363.0 | CTAF 122.9 |
|----------------------------|--|----------------------|



| | | | |
|------|-----|------|-----|
| ELEV | 836 | TDZE | 836 |
|------|-----|------|-----|

R-6901A
Procedure NA for arrivals at HURST on V345 southeast bound.
3500 MPT
324°
(26.1)
(IAF) HURST



| | CATEGORY | A | B | C | D |
|--------------|----------|-----------------------|-----------------------|-----------------------|------------------------|
| LPV DA | | | 1087-1 | 251 (300-1) | |
| LNAV/VNAV DA | | | 1120-1 | 284 (300-1) | |
| LNAV MDA | | | 1200-1 | 364 (400-1) | |
| CIRCLING | | 1280-1 444 (500-1) | 1380-1 544 (600-1) | 1520-2 684 (700-2) | 1760-3 924 (1000-3) |

EC-3, 28 NOV 2024 to 26 DEC 2024

EC-3, 28 NOV 2024 to 26 DEC 2024