

APP CRS	Rwy Idg	N/A
012°	TDZE	N/A
	Apt Elev	841

# RNAV (GPS)-A

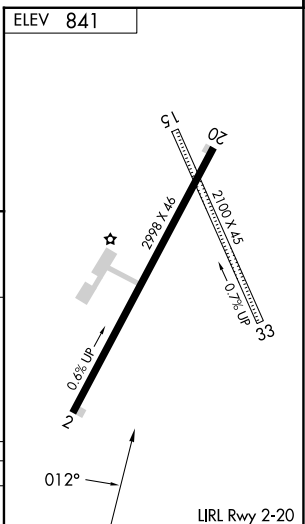
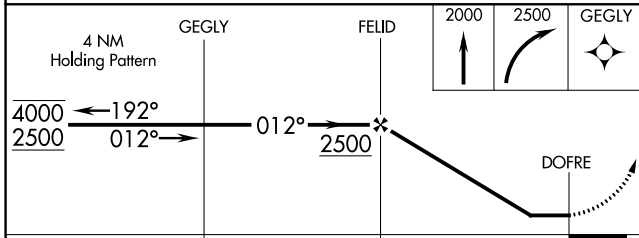
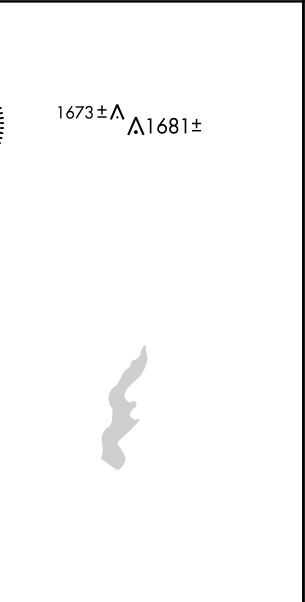
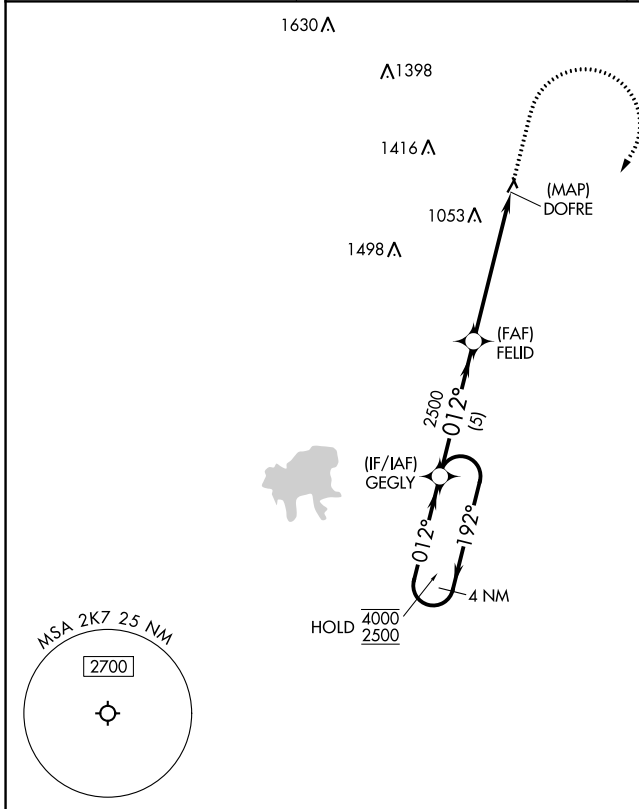
NEODESHA MUNI (2K7)

RNP APCH - GPS.

**V**  
**Δ**NA Circling NA to Rwys 15 and 33. Circling Rwy 20 NA at night. Rwy 20 helicopter visibility reduction below 1 SM NA. Use Chanute altimeter setting; when not received, use Joplin altimeter setting and increase MDAs 100 feet.

MISSED APPROACH: Climb to 2000 then climbing right turn to 2500 direct GEGLY and hold.

CNU ASOS <b>127.075</b>	KANSAS CITY CENTER <b>132.9 279.5</b>	UNICOM <b>122.8 (CTAF)</b>
----------------------------	--	-------------------------------



CATEGORY	A	B	C	D
CIRCLING	1500-1	659 (700-1)	NA	

NC-2, 28 NOV 2024 to 26 DEC 2024

NC-2, 28 NOV 2024 to 26 DEC 2024