

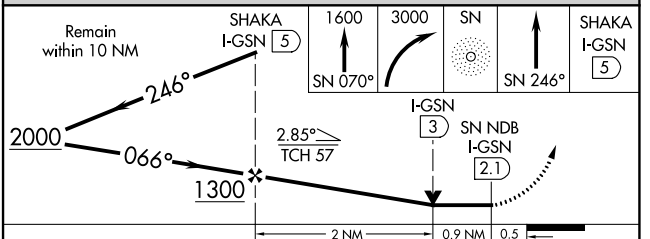
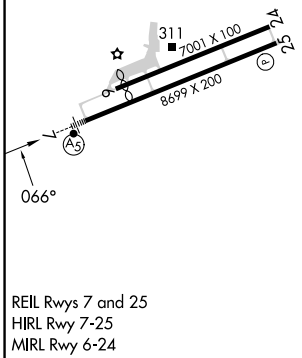
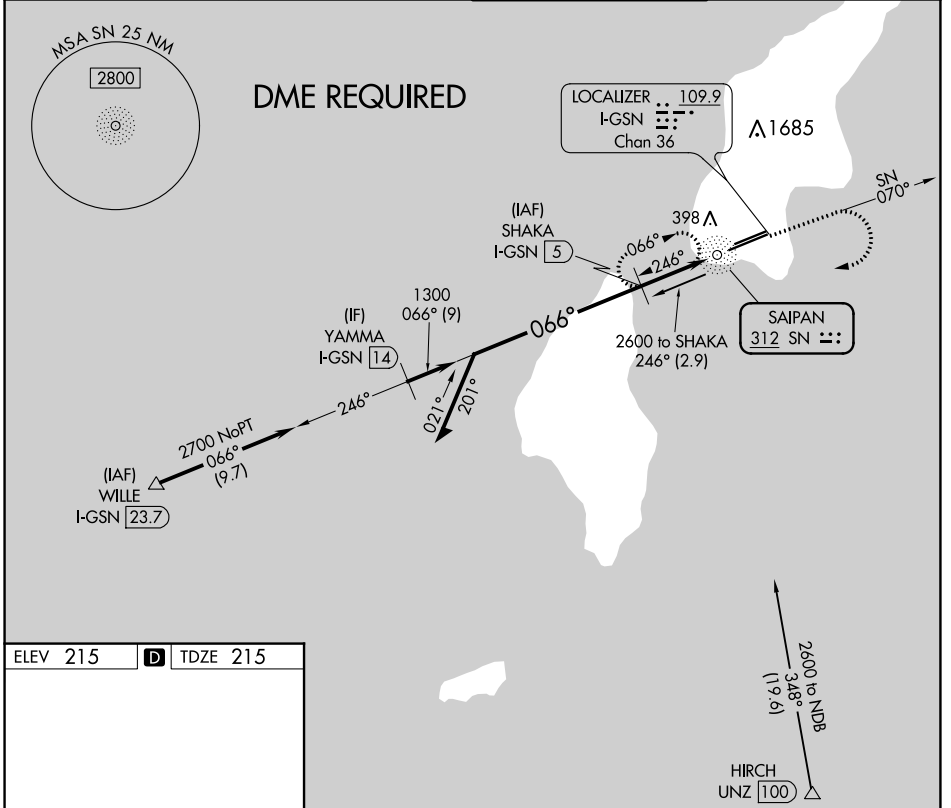
NDB SN 312	APP CRS 066°	Rwy ldg TDZE Apt Elev	8010 215 215
----------------------	------------------------	-----------------------------	---

NDB Z RWY 7

FRANCISCO C ADA/SAIPAN INTL (GSN)(PGSN)

<p>Circling NA north of Rwy 6-24. DME required.</p>	<p>MALS R</p>	<p>MISSED APPROACH: Climb to 1600 on SN NDB bearing 070° then climbing right turn to 3000 direct SN NDB then on SN NDB bearing 246° to SHAKA/I-GSN 5 DME and hold.</p>

<p>ATIS 127.2</p>	<p>GUAM CERAP 118.4 290.5</p>	<p>SAIPAN TOWER 125.7 256.9</p>	<p>GND CON 121.8</p>
------------------------------	--	--	---------------------------------



CATEGORY	A	B	C	D
S-7	760-3/4	545 (600-3/4)	760-1 1/8	545 (600-1 1/8)
C CIRCLING	760-1	545 (600-1)	760-1 1/8	780-2 565 (600-2)