

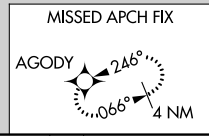
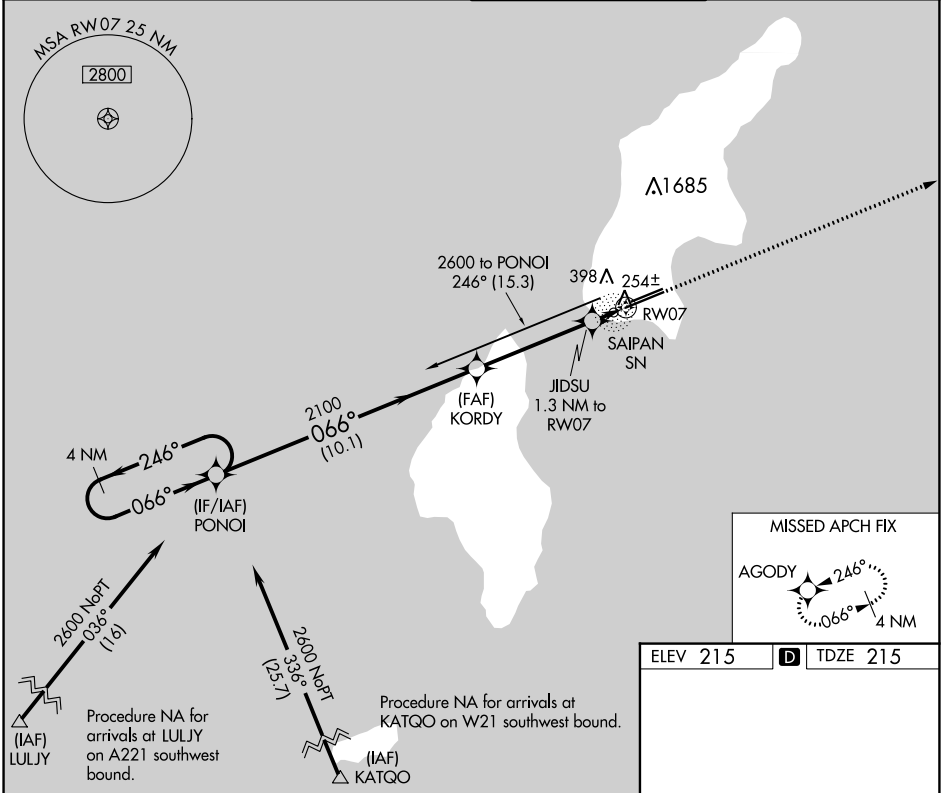
APP CRS	Rwy Idg	<b>8010</b>
<b>066°</b>	TDZE	<b>215</b>
	Apt Elev	<b>215</b>

# RNAV (GPS) RWY 7

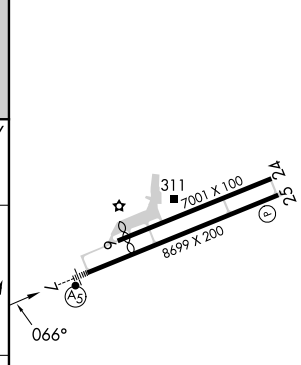
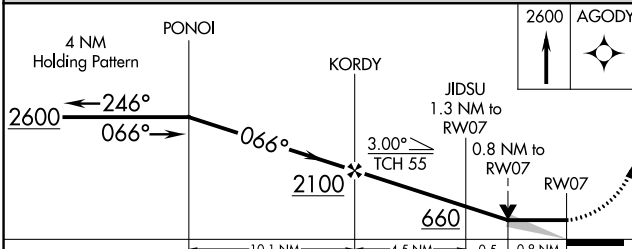
FRANCISCO C ADA/SAIPAN INTL (GSN)(PGSN)

	Circling NA north of Rwy 6-24. DME/DME RNP-0.3 NA.	MISSED APPROACH: Climb 2600 direct AGODY and hold.

ATIS <b>127.2</b>	GUAM CERAP <b>118.4 290.5</b>	SAIPAN TOWER <b>125.7 256.9</b>	GND CON <b>121.8</b>
----------------------	----------------------------------	------------------------------------	-------------------------



ELEV 215	<b>D</b> TDZE 215
----------	-------------------



CATEGORY	A	B	C	D
LNVA MDA	520-½ 305 (400-½)			
<b>C</b> CIRCLING	720-1	505 (600-1)	720-1½ 505 (600-1½)	780-2 565 (600-2)

REIL Rwy 7 and 25  
 HIRL Rwy 7-25  
 MIRL Rwy 6-24

PAC, 31 OCT 2024 to 26 DEC 2024

PAC, 31 OCT 2024 to 26 DEC 2024