

PITTSFIELD, ILLINOIS

AL-6310 (FAA)

23334

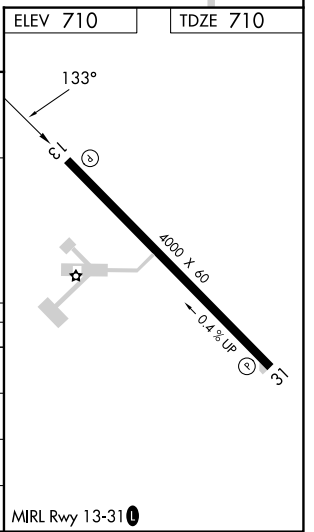
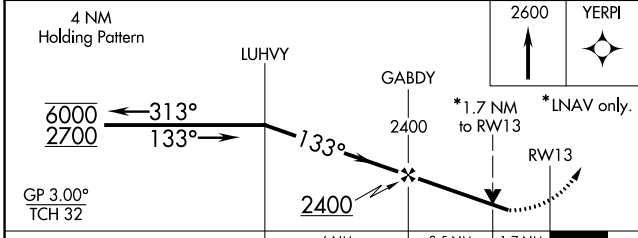
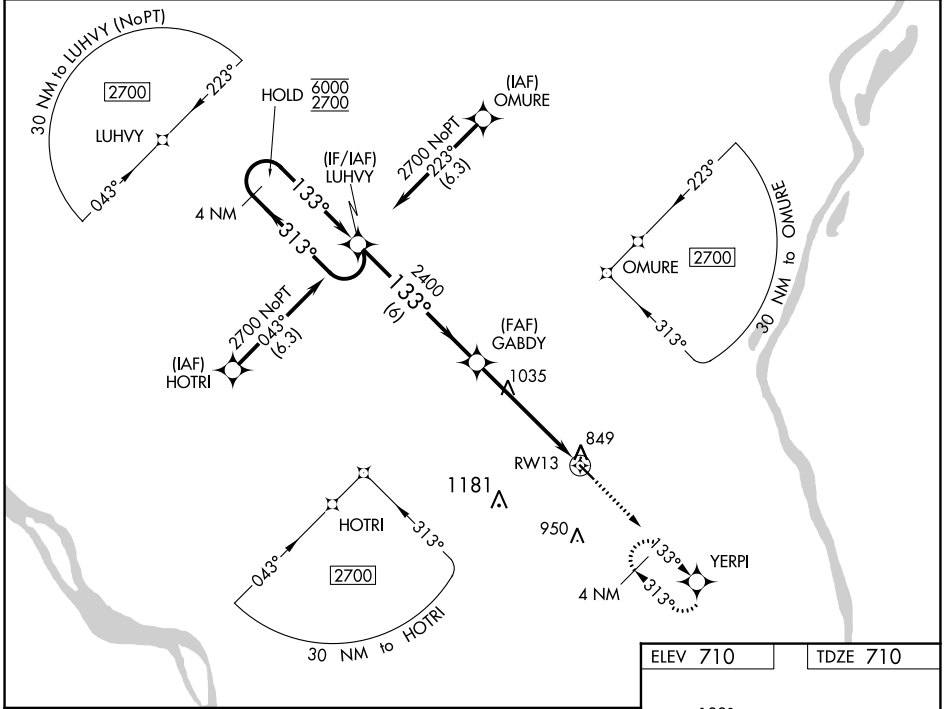
WAAS CH <b>86642</b> <b>W13A</b>	APP CRS <b>133°</b>	Rwy Idg <b>4000</b> TDZE <b>710</b> Apt Elev <b>710</b>
--	------------------------	---

# RNAV (GPS) RWY 13

PITTSFIELD PENSTONE MUNI (PPQ)

RNP APCH.	For uncompensated Baro-VNAV systems, LNAV/VNAV NA below -16°C or above 54°C. Rwy 13 helicopter visibility reduction below 3/4 SM NA.	MISSED APPROACH: Climb to 2600 direct YERPI and hold.
-----------	---	---

AWOS-3PT <b>118.525</b>	KANSAS CITY CENTER <b>126.225 317.775</b>	UNICOM <b>122.8 (CTAF) 0</b>
----------------------------	--	---------------------------------



CATEGORY	A	B	C	D
LPV DA	960-1	250 (300-1)		NA
LNAV/VNAV DA	1168-1 3/8	458 (500-1 3/8)		NA
LNAV MDA	1300-1	590 (600-1)	1300-1 3/4 590 (600-1 3/4)	NA
CIRCLING	1300-1	590 (600-1)	1340-1 3/4 630 (700-1 3/4)	NA

PITTSFIELD, ILLINOIS  
Amdt 1 20JUN19

39°38'N-90°47'W

PITTSFIELD PENSTONE MUNI (PPQ)  
**RNAV (GPS) RWY 13**

EC-3, 28 NOV 2024 to 26 DEC 2024

EC-3, 28 NOV 2024 to 26 DEC 2024