

(STYCK8.STYCK) 21280

AL-6395 (FAA)

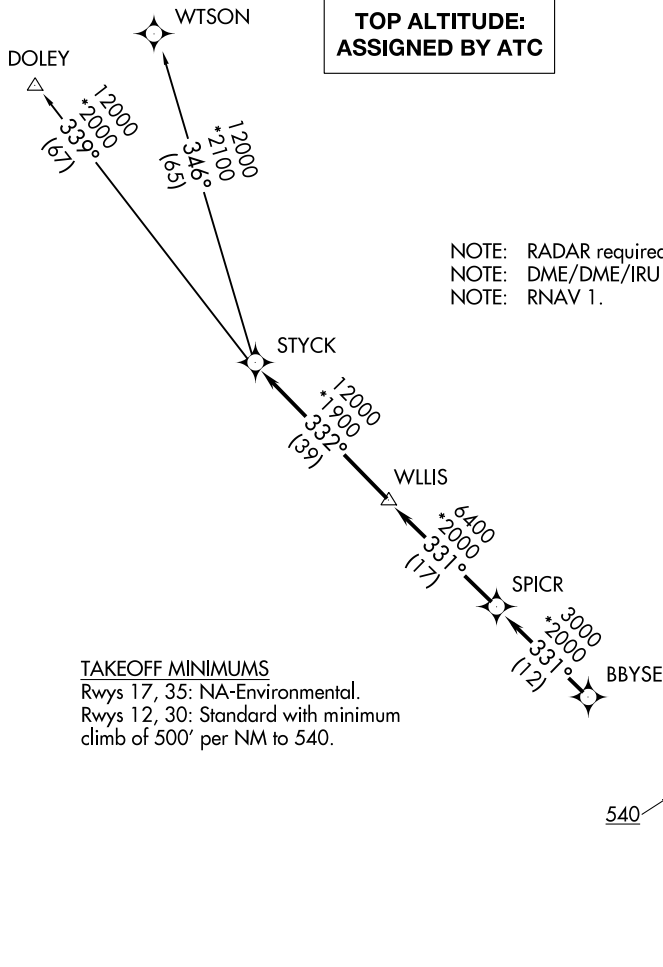
CHAMBERS COUNTY (T00)

STYCK EIGHT DEPARTURE (RNAV)

ANAHUAC, TEXAS

**TOP ALTITUDE:
ASSIGNED BY ATC**

CTAF
122.9
HOUSTON DEP CON
134.45 284.0



NOTE: RADAR required.
NOTE: DME/DME/IRU or GPS required.
NOTE: RNAV 1.

TAKEOFF MINIMUMS

Rwys 17, 35: NA-Environmental.
Rwys 12, 30: Standard with minimum
climb of 500' per NM to 540.

NOTE: Chart not to scale.



DEPARTURE ROUTE DESCRIPTION

TAKEOFF RUNWAY 12: Climb on heading 124° to 540 for RADAR vectors to BBYSE, thence. . .

TAKEOFF RUNWAY 30: Climb on heading 304° to 540 for RADAR vectors to BBYSE, thence. . .

. . . on track 331° to SPICR, then on track 331° to WLLIS, then on track 332° to STYCK, then on (transition). Maintain ATC assigned altitude. Expect filed altitude 10 minutes after departure.

DOLEY TRANSITION (STYCK8.DOLEY)

WTSON TRANSITION (STYCK8.WTSON)

STYCK EIGHT DEPARTURE (RNAV)

(STYCK8.STYCK) 07OCT21

ANAHUAC, TEXAS

CHAMBERS COUNTY (T00)

SC-5, 28 NOV 2024 to 26 DEC 2024

SC-5, 28 NOV 2024 to 26 DEC 2024