

WYLSN EIGHT DEPARTURE (RNAV)

CTAF
122.9
HOUSTON DEP CON
134.45 284.0

**TOP ALTITUDE:
ASSIGNED BY ATC**

NOTE: RADAR required.
NOTE: DME/DME/IRU or GPS required.
NOTE: RNAV 1.

TAKEOFF MINIMUMS

Rwy 17, 35: NA - Environmental.
Rwy 12, 30: Standard with minimum
climb of 500' per NM to 540.

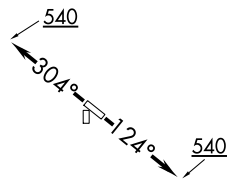
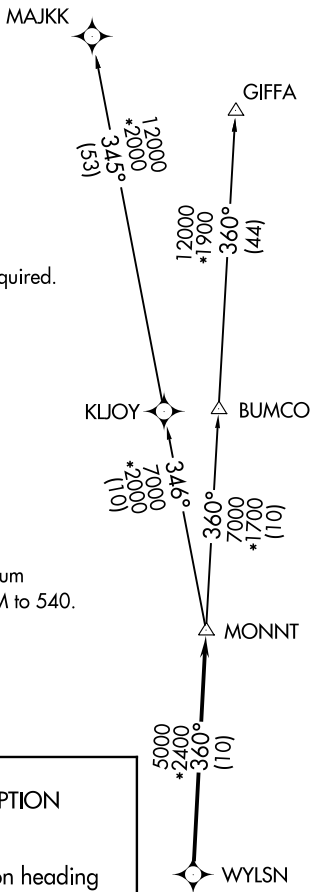
DEPARTURE ROUTE DESCRIPTION

TAKEOFF RUNWAY 12: Climb on heading
124° to 540 for RADAR vectors to WYLSN,
thence. . . .

TAKEOFF RUNWAY 30: Climb on heading
304° to 540 for RADAR vectors to WYLSN,
thence. . . .

. . . .on track 360° to MONNT, then on
(transition). Maintain ATC assigned altitude.
Expect filed altitude 10 minutes after departure.

GIFFA TRANSITION (WYLSN8.GIFFA)
MAJJK TRANSITION (WYLSN8.MAJJK)



NOTE: Chart not to scale.

SC-5, 28 NOV 2024 to 26 DEC 2024

SC-5, 28 NOV 2024 to 26 DEC 2024