

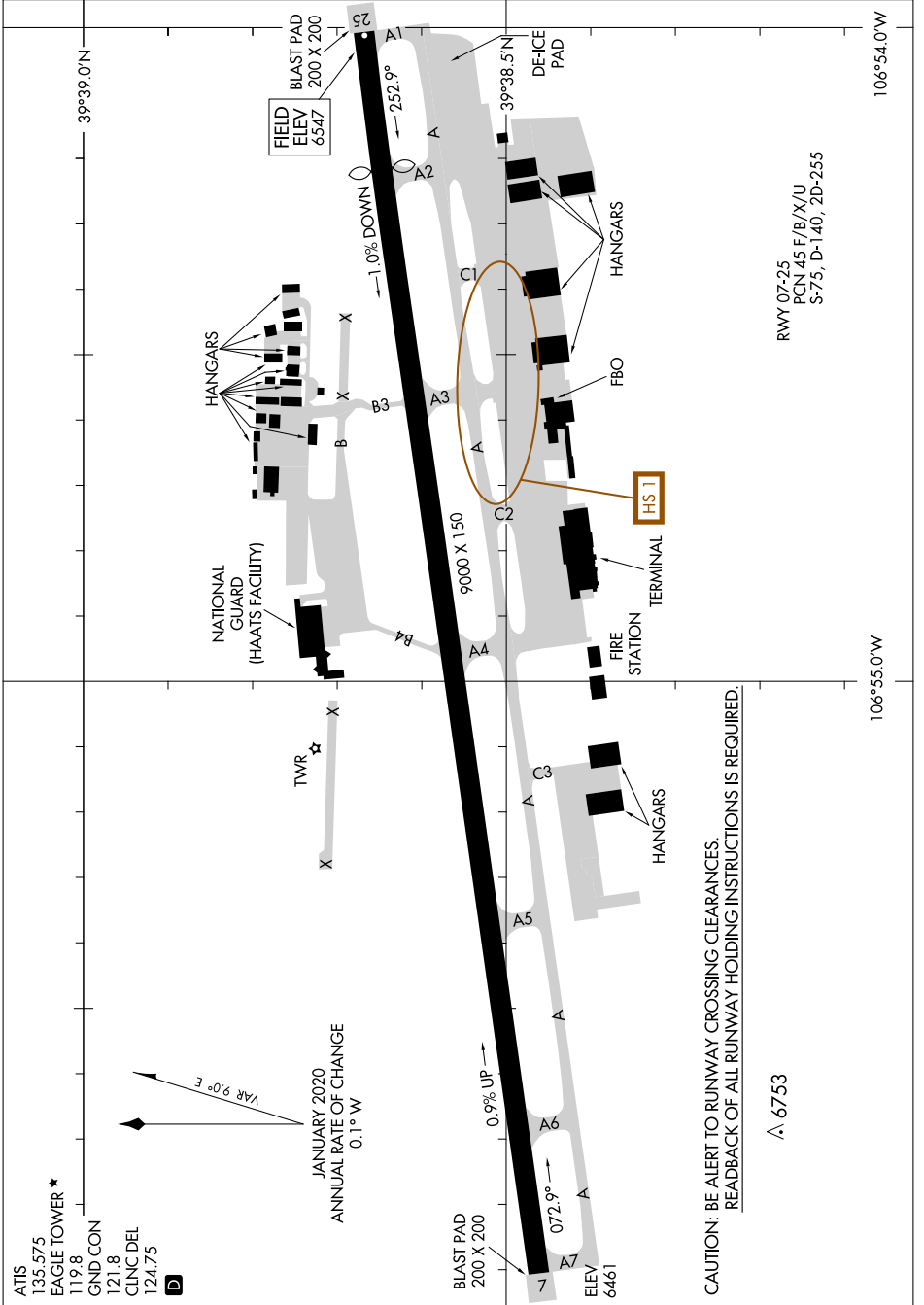
22251

AIRPORT DIAGRAM

EAGLE COUNTY RGNL (E/GE)
EAGLE, COLORADO

AL-6403 (FAA)

SW-1, 28 NOV 2024 to 26 DEC 2024



RWY 07-25
PCN 45 F/X/U
S-75, D-140, 2D-255

CAUTION: BE ALERT TO RUNWAY CROSSING CLEARANCES.
READBACK OF ALL RUNWAY HOLDING INSTRUCTIONS IS REQUIRED.

△ 6753

AIRPORT DIAGRAM

22251

EAGLE, COLORADO
EAGLE COUNTY RGNL (E/GE)

SW-1, 28 NOV 2024 to 26 DEC 2024