

WAAS CH <b>86638</b> <b>W24A</b>	APP CRS <b>235°</b>	Rwy Idg <b>5500</b> TDZE <b>86</b> Apt Elev <b>99</b>
--	------------------------	---

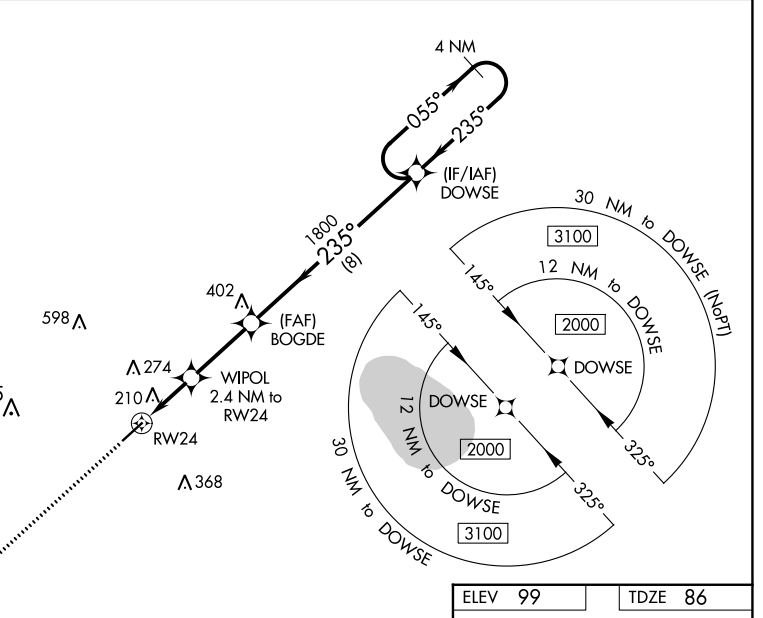
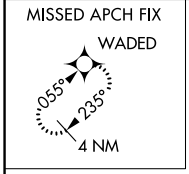
# RNAV (GPS) RWY 24

COLUMBUS COUNTY MUNI (CPC)

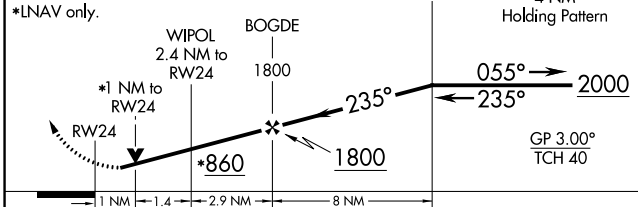
**RNP APCH.**  
 ⚠ For uncompensated Baro-VNAV systems, LNAV/VNAV NA below -15°C (5°F) or above 54°C (130°F). Baro-VNAV and VDP NA when using Elizabethtown altimeter setting.  
 ⚠ Helicopter visibility reduction below 3/4 SM NA. When local altimeter setting not received, use Elizabethtown altimeter setting and increase LPV DA to 427 feet, LNAV/VNAV DA to 441 feet and all visibilities 1/4 mile. Increase all MDA 60 feet and all Cat C and D visibilities 1/4 mile.

**MISSED APPROACH:**  
 Climb to 2000 direct  
 WADED and hold.

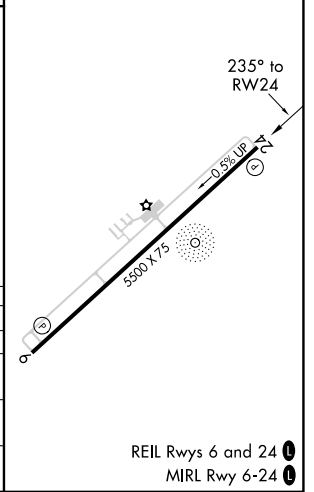
AWOS-3 <b>118.375</b>	MYRTLE BEACH APP CON * <b>119.2 350.3</b>	UNICOM <b>122.8 (CTAF) 0</b>
--------------------------	--	---------------------------------



**2000** **WADED**  
 VGSi and RNAV glidepath not coincident (VGSi Angle 3.25/TCH 42).



ELEV <b>99</b>	TDZE <b>86</b>
----------------	----------------



CATEGORY	A	B	C	D
LPV DA		374-1	288 (300-1)	
LNAV/VNAV DA		388-1½	302 (300-1½)	
LNAV MDA		460-1	374 (400-1)	
<b>CIRCLING</b>	520-1 421 (500-1)	580-1 481 (500-1)	680-1½ 581 (600-1½)	780-2¼ 681 (700-2¼)

REIL Rws 6 and 24 **0**  
 MIRL Rwy 6-24 **0**

SE-2, 28 NOV 2024 to 26 DEC 2024

SE-2, 28 NOV 2024 to 26 DEC 2024