

(CHOIR3.CHOIR) 24305

CHOIR THREE DEPARTURE (RNAV)

AL-6436 (FAA)

ALTURAS MUNI (AAT)
ALTURAS, CALIFORNIA

**TOP ALTITUDE:
ASSIGNED BY ATC**

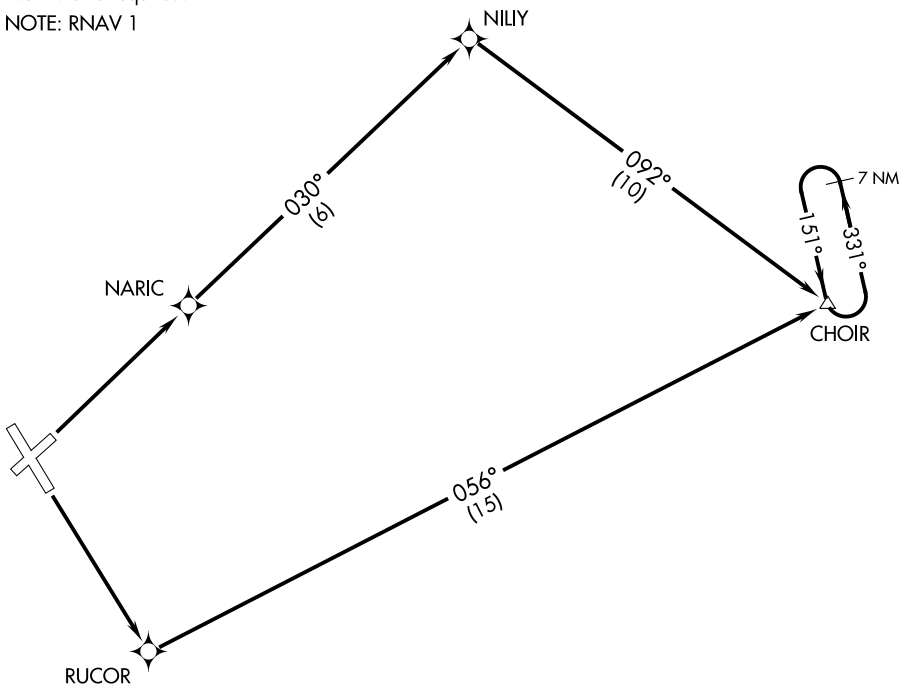
SEATTLE CENTER
127.6 346.35
CTAF 122.8

TAKEOFF MINIMUMS

Rwy 3: Standard with minimum climb of 367' per NM to 11000.
Rwy 13: Standard with minimum climb of 389' per NM to 11000.
Rwys 21 and 31: NA - ATC.

NOTE: GPS required.

NOTE: RNAV 1



NOTE: Chart not to scale.



DEPARTURE ROUTE DESCRIPTION

TAKEOFF RUNWAY 3: Climb to 11000 direct NARIC and via 030° track to NILIY and via 092° track to CHOIR, thence....

TAKEOFF RUNWAY 13: Climb to 11000 direct RUCOR and via 056° track to CHOIR, thence....

....climb in holding, (if required) before proceeding on course.

CHOIR THREE DEPARTURE (RNAV)

(CHOIR3.CHOIR) 15SEP16

ALTURAS, CALIFORNIA
ALTURAS MUNI (AAT)

SW-2, 28 NOV 2024 to 26 DEC 2024

SW-2, 28 NOV 2024 to 26 DEC 2024