

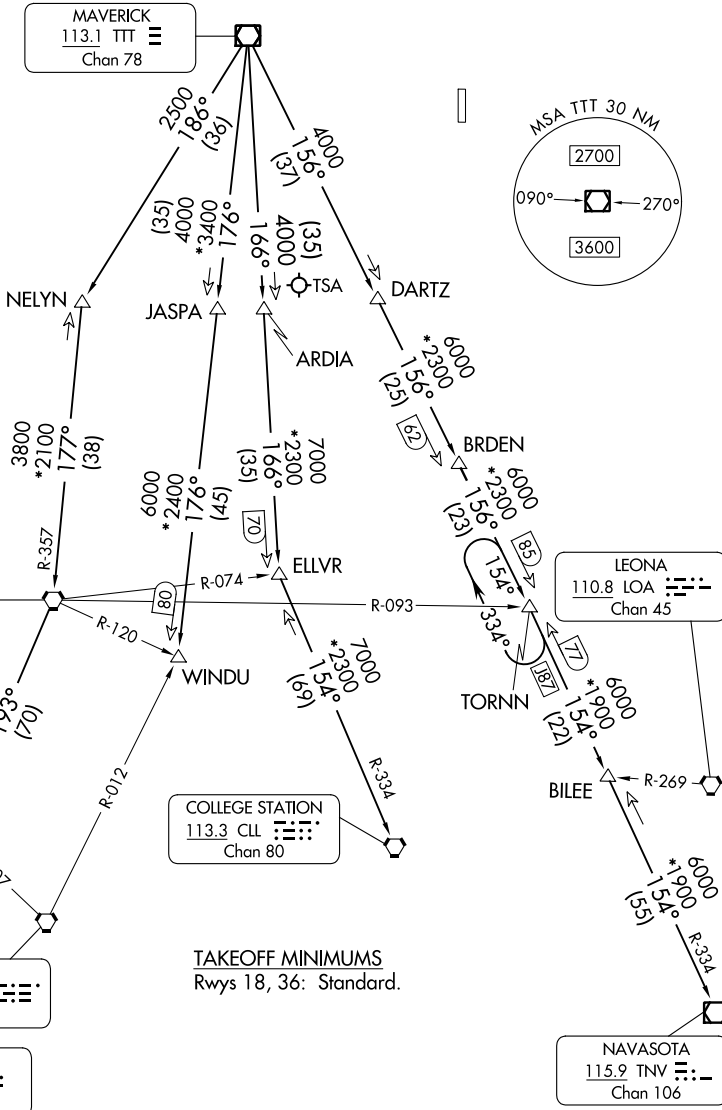
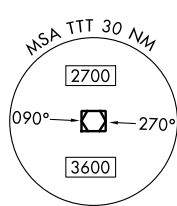
# JOE POOL SEVEN DEPARTURE

LONE STAR DEP CON  
125.2 343.65  
MESQUITE TOWER★  
120.3 (CTAF)

RADAR and DME required.

**TOP ALTITUDE:  
ASSIGNED BY ATC**

MAVERICK  
113.1 TTT  
Chan 78



TAKEOFF MINIMUMS  
Rwys 18, 36: Standard.

(CONTINUED ON FOLLOWING PAGE)

NOTE: Chart not to scale.

SC-2, 28 NOV 2024 to 26 DEC 2024

SC-2, 28 NOV 2024 to 26 DEC 2024

# JOE POOL SEVEN DEPARTURE