

WAAS CH <b>78424</b> <b>W07A</b>	APP CRS <b>074°</b>	Rwy Idg <b>3750</b> TDZE <b>68</b> Apt Elev <b>70</b>
--	------------------------	---

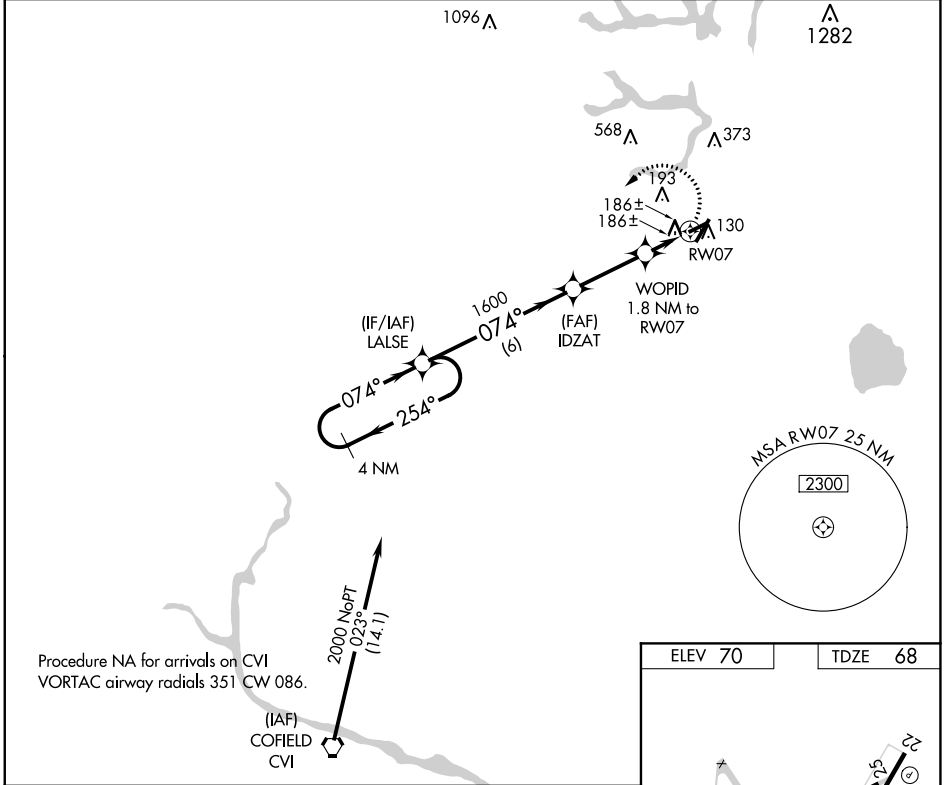
# RNAV (GPS) RWY 7

SUFFOLK EXEC (SF<sup>Q</sup>)

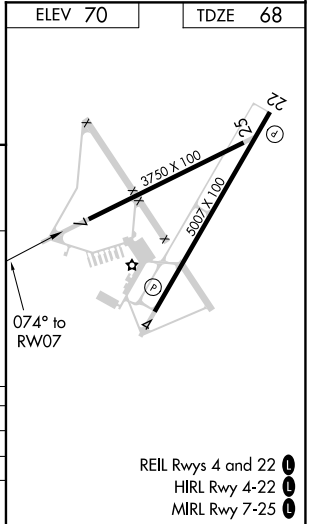
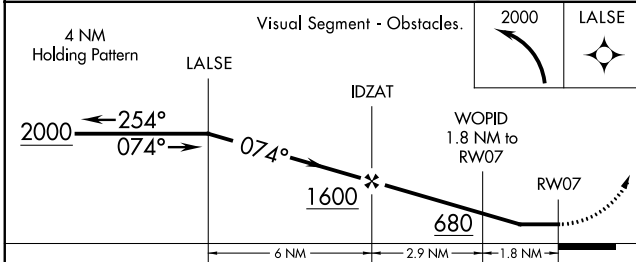
**⚠** DME/DME RNP-0.3 NA. Helicopter visibility reduction below ¾ SM NA. When local altimeter setting not received, use Norfolk Intl altimeter setting and increase all MDA 60 feet.

**⚠** MISSED APPROACH: Climbing left turn to 2000 direct LALSE and hold.

AWOS-3 <b>119.375</b>	NORFOLK APP CON <b>127.9 269.425</b>	UNICOM <b>122.7 (CTAF)</b> <b>📻</b>
--------------------------	---	--



Procedure NA for arrivals on CVI VORTAC airway radials 351 CW 086.



CATEGORY	A	B	C	D
LP MDA	480-1	412 (500-1)		NA
LNAY MDA	500-1	432 (500-1)		NA
<b>C</b> CIRCLING	500-1 430 (500-1)	560-1 490 (500-1)		NA

NE-3, 28 NOV 2024 to 26 DEC 2024

NE-3, 28 NOV 2024 to 26 DEC 2024