

APP CRS	Rwy Idg	N/A
145°	TDZE	N/A
	Apt Elev	963

# RNAV (GPS)-C

GRANT COUNTY (W99)

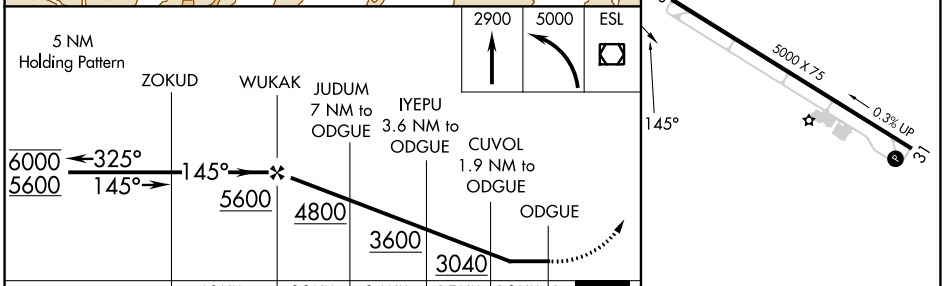
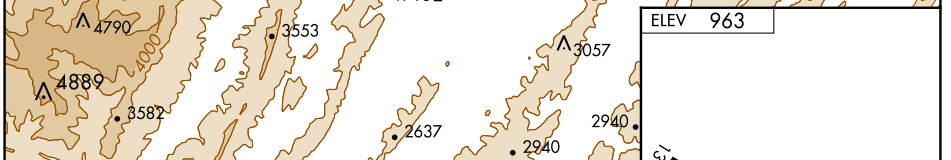
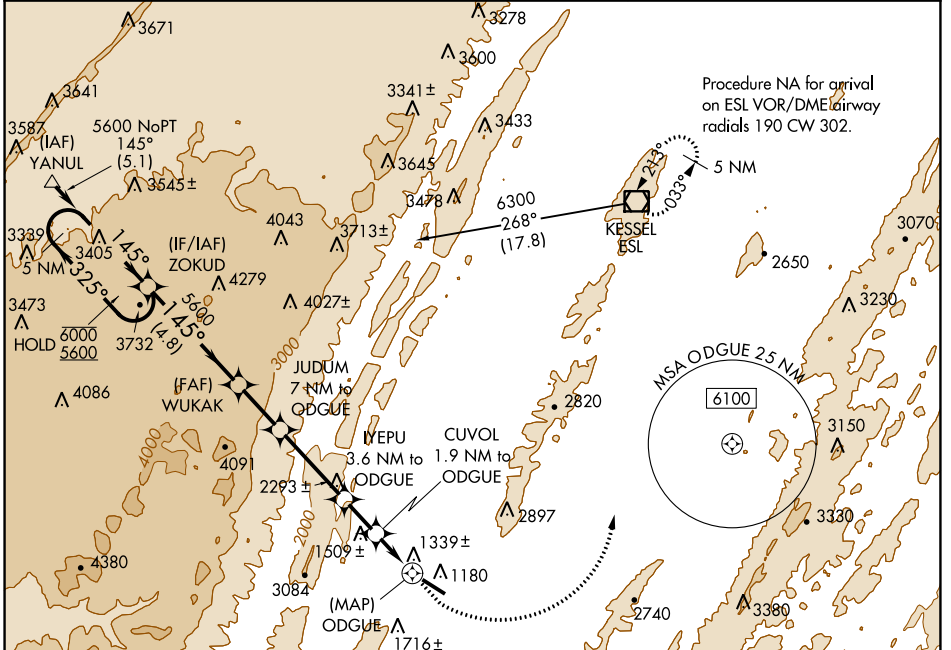
RNP APCH - GPS

**▲** When local altimeter setting not received, procedure NA.

**⚠** MISSED APPROACH: Climb to 2900 then climbing left turn to 5000 direct ESL VOR/DME and hold.

**❄** -8°C

AWOS-3 <b>124.475</b>	WASHINGTON CENTER <b>133.55 322.55</b>	UNICOM <b>122.8 (CTAF)</b>
--------------------------	---	-------------------------------



CATEGORY	A	B	C	D
CIRCLING	2400-1¼ 1437 (1500-1¼)	2400-1½ 1437 (1500-1½)	NA	NA

MIRL Rwy 13-31  
REIL Rws 13 and 31

NE-4, 28 NOV 2024 to 26 DEC 2024

NE-4, 28 NOV 2024 to 26 DEC 2024