

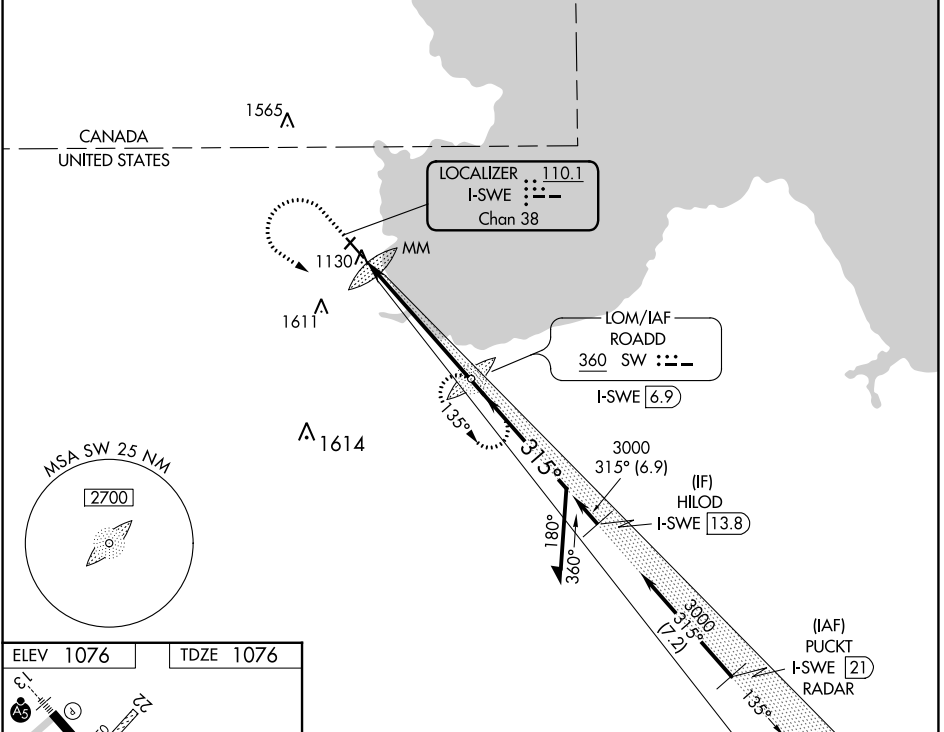
LOC/DME I-SWE <b>110.1</b> Chan <b>38</b>	APP CRS <b>315°</b>	Rwy Idg <b>5400</b> TDZE <b>1076</b> Apt Elev <b>1076</b>
---	------------------------	---

# ILS or LOC RWY 31

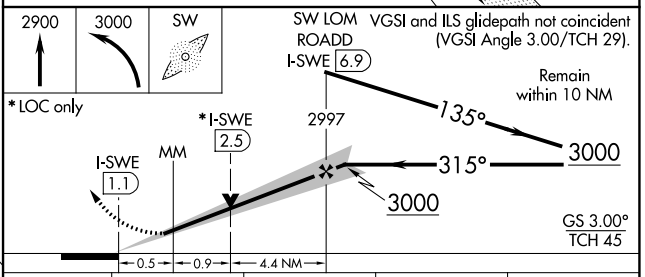
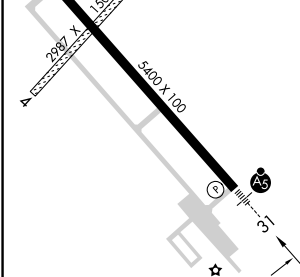
WARROAD INTL MEML (R.R.T)

ADF required. RADAR required for procedure entry.		MALSR	MISSED APPROACH: Climb to 2900 then climbing left turn to 3000 direct ROADD LOM/I-SWE 6.9 DME and hold.
<p>▼ NA Circling NA to Rwy's 4 and 22.</p> <p>▲ For inop ALS, increase S-LOC 31 Cat C/D visibility to 1 3/8 SM.</p>			

AWOS-3 <b>119.925</b>	MINNEAPOLIS CENTER <b>134.75 251.1</b>	GCO <b>121.725</b>	UNICOM <b>123.05 (CTAF) 0</b>
--------------------------	---	-----------------------	----------------------------------



ELEV 1076	TDZE 1076
-----------	-----------



CATEGORY	A	B	C	D
S-ILS 31	1276-1/2		200 (200-1/2)	
S-LOC 31	1560-1/2	484 (500-1/2)	1560-1	484 (500-1)
<input checked="" type="checkbox"/> CIRCLING	1560-1	484 (500-1)	1960-2 3/4 884 (900-2 3/4)	1960-3 884 (900-3)

NC-1, 28 NOV 2024 to 26 DEC 2024

NC-1, 28 NOV 2024 to 26 DEC 2024