

WAAS CH 42706 W31A	APP CRS 315°	Rwy Idg TDZE Apt Elev	5400 1076 1076
--	------------------------	-----------------------------	---

RNAV (GPS) RWY 31

WARROAD INTL MEML (R.R.T)

RNP APCH.

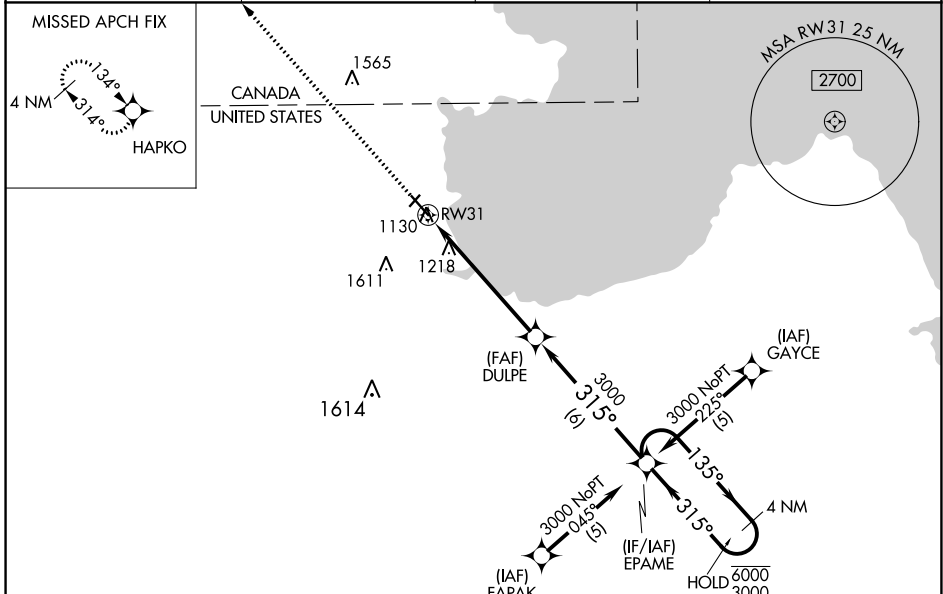
⚠ Circling NA to Rwy 4 and 22. For uncompensated Baro-VNAV systems, LNAV/VNAV NA below -17°C or above 54°C. For inop ALS increase LNAV/VNAV all Cats visibility to 1 SM and LNAV Cat C/D visibility to 1½ SM.

MALSRL

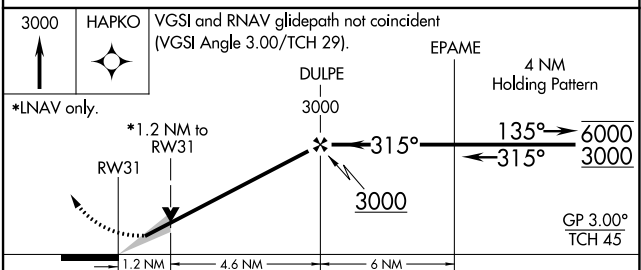
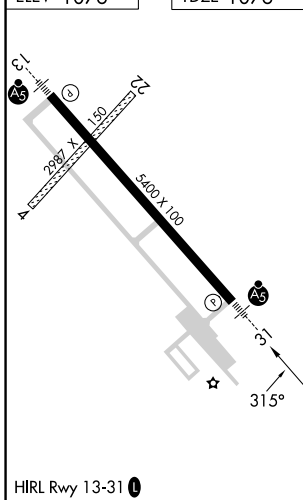


MISSED APPROACH: Climb to 3000 direct HAPKO and hold.

AWOS-3 119.925	MINNEAPOLIS CENTER 134.75 251.1	GCO 121.725	UNICOM 123.05 (CTAF) ①
--------------------------	---	-----------------------	---



ELEV 1076	TDZE 1076
-----------	-----------



CATEGORY	A	B	C	D
LPV DA	1326-½ 250 (300-½)			
LNAV/VNAV DA	1451-¾ 375 (400-¾)			
LNAV MDA	1480-½ 404 (500-½)	1480-¾ 404 (500-¾)		1480-1 404 (500-1)
C CIRCLING	1500-1 424 (500-1)	1540-1 464 (500-1)	1960-2¾ 884 (900-2¾)	1960-3 884 (900-3)

NC-1, 28 NOV 2024 to 26 DEC 2024

NC-1, 28 NOV 2024 to 26 DEC 2024