

VOR/DME JOT <b>112.3</b> Chan <b>70</b>	APP CRS <b>041°</b>	Rwy Idg TDZE Apt Elev	<b>N/A</b> <b>N/A</b> <b>675</b>
---	------------------------	-----------------------------	--

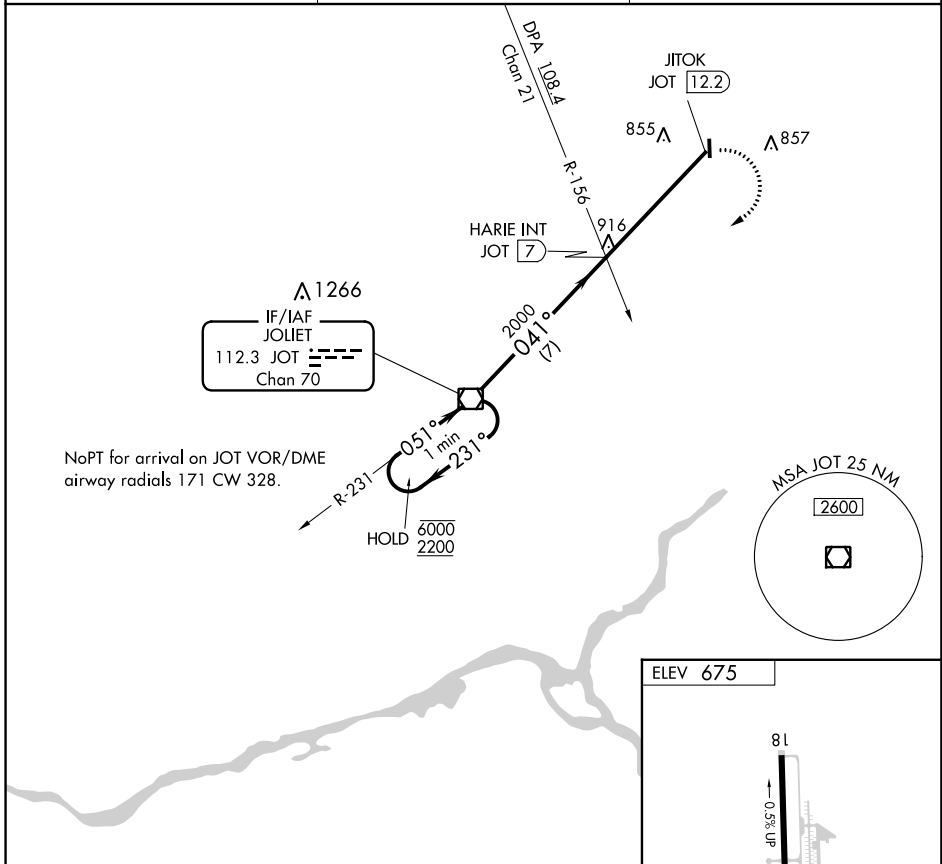
# VOR-A

BOLINGBROOK'S CLOW INTL (1C5)

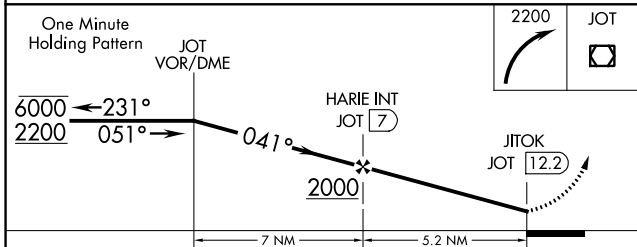
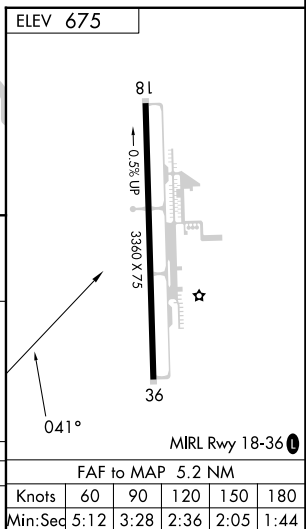
**NA** Procedure NA at night. Use Lewis University altimeter setting.

MISSED APPROACH: Climbing right turn to 2200 direct JOT VOR/DME and hold.

LOT AWOS-3PT <b>126.675</b>	CHICAGO APP CON <b>119.35 354.075</b>	CTAF <b>122.9</b>
--------------------------------	--	----------------------



NoPT for arrival on JOT VOR/DME airway radials 171 CW 328.



CATEGORY	A	B	C	D	FAF to MAP 5.2 NM						
CIRCLING	1180-1	1220-1	NA			Knots	60	90	120	150	180
	505 (600-1)	545 (600-1)				Min:Seq	5:12	3:28	2:36	2:05	1:44

EC-3, 28 NOV 2024 to 26 DEC 2024

EC-3, 28 NOV 2024 to 26 DEC 2024