

APP CRS	Rwy Idg	5501
189°	TDZE	1016
	Apt Elev	1016

RNAV (GPS) RWY 19

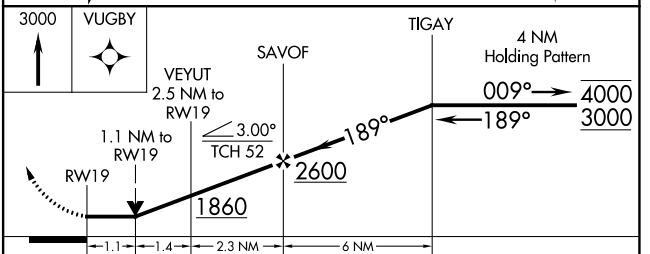
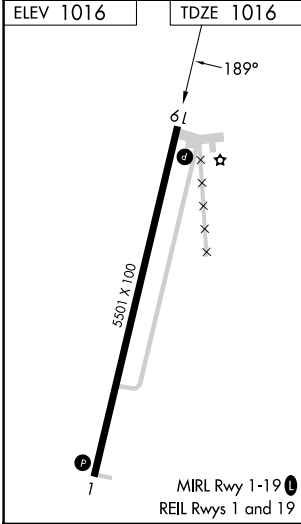
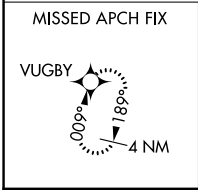
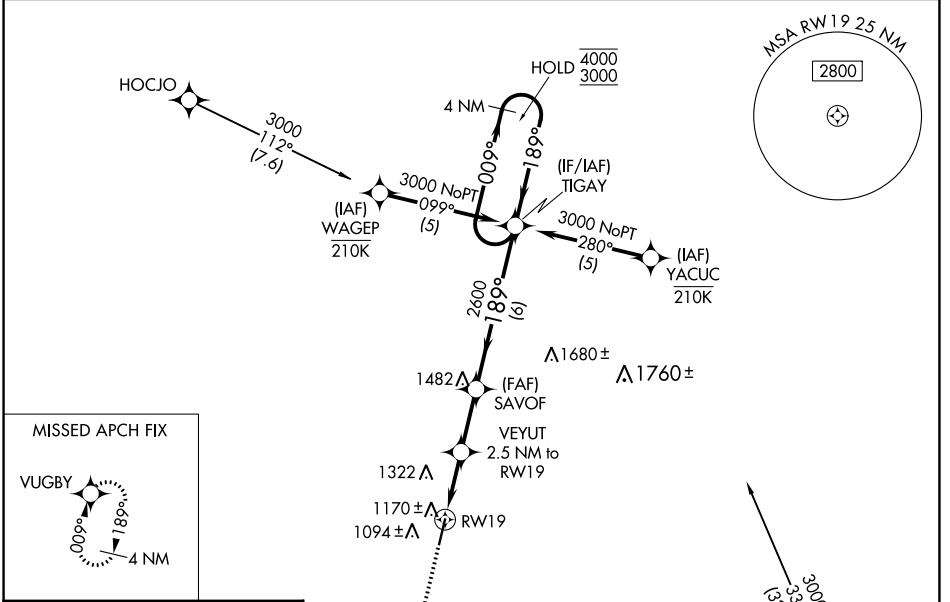
ALLEN COUNTY (K88)

RNP APCH - GPS.

⚠ Rwy 19 helicopter visibility reduction below 3/4 SM NA. When local altimeter setting not received, use Chanute altimeter setting; increase all MDAs 40 feet and LNAV visibility Cat C 1/2 SM and Circling visibility Cat C 1/4 SM. VDP NA when using Chanute altimeter setting.

MISSED APPROACH: Climb to 3000 direct VUGBY and hold.

AWOS-3PT 128.325	KANSAS CITY CENTER 127.725 270.25	UNICOM 122.8 (CTAF) 0
----------------------------	---------------------------------------------	---------------------------------



CATEGORY	A	B	C	D
LNAV MDA	1420-1	404 (500-1)	1420-1 1/8 404 (500-1 1/8)	NA
CIRCLING	1480-1 464 (500-1)	1660-1 644 (700-1)	1660-1 3/4 644 (700-1 3/4)	NA

NC-2, 28 NOV 2024 to 26 DEC 2024

NC-2, 28 NOV 2024 to 26 DEC 2024