

WAAS CH 72614 W05A	APP CRS 055°	Rwy Idg 5080 TDZE 360 Apt Elev 361
--	------------------------	---

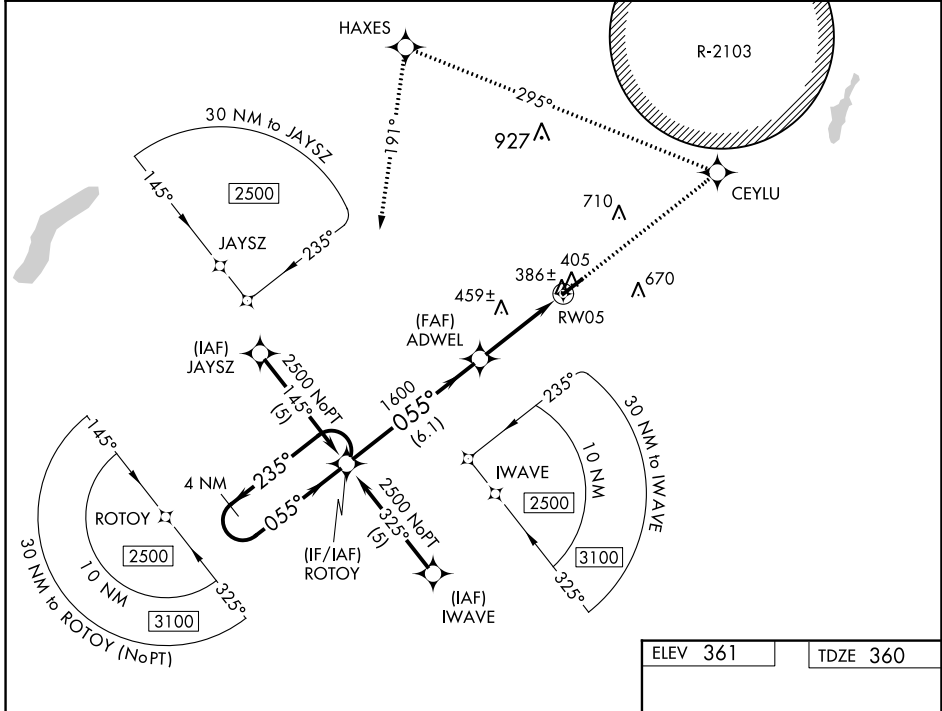
RNAV (GPS) RWY 5

ENTERPRISE MUNI (EDN)

▼ Baro-VNAV NA. For uncompensated Baro-VNAV systems, LNAV/VNAV NA below -15°C (5°F) or above 54°C (130°F). DME/DME RNP-0.3 NA.
▲ NA Use Cairns AAF (Fort Novosel) altimeter setting.

MISSED APPROACH: Climb to 2500 direct CEYLU and left turn via track 295° to HAXES and left turn via track 191° to ROTOY and hold.

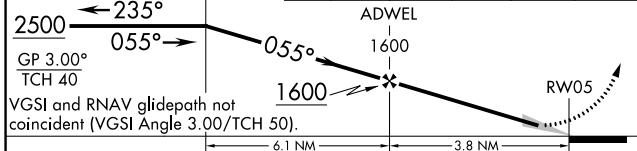
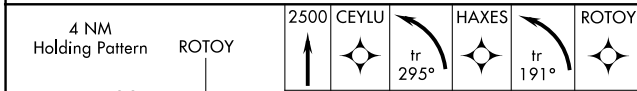
AWOS-3PT 118.9	CAIRNS APP CON★ 133.45 239.275	UNICOM 122.8(CTAF) 0
--------------------------	--	--------------------------------



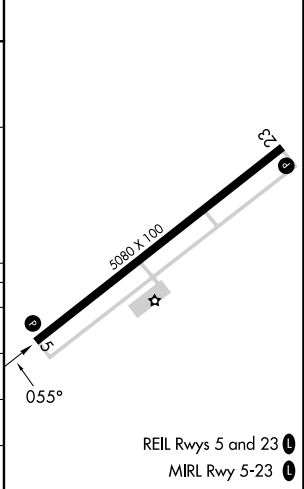
SE-4, 28 NOV 2024 to 26 DEC 2024

SE-4, 28 NOV 2024 to 26 DEC 2024

ELEV 361	TDZE 360
----------	----------



CATEGORY	A	B	C	D
LPV DA	642-1 282 (300-1)			NA
LNAV/VNAV DA	688-1¼ 328 (400-1¼)			NA
LNAV MDA	760-1 400 (400-1)			NA
CIRCLING	920-1 559 (600-1)		1100-2 739 (800-2)	NA



REIL Rwys 5 and 23 0
MIRL Rwy 5-23 0