

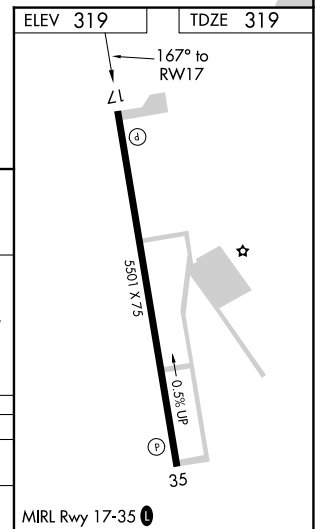
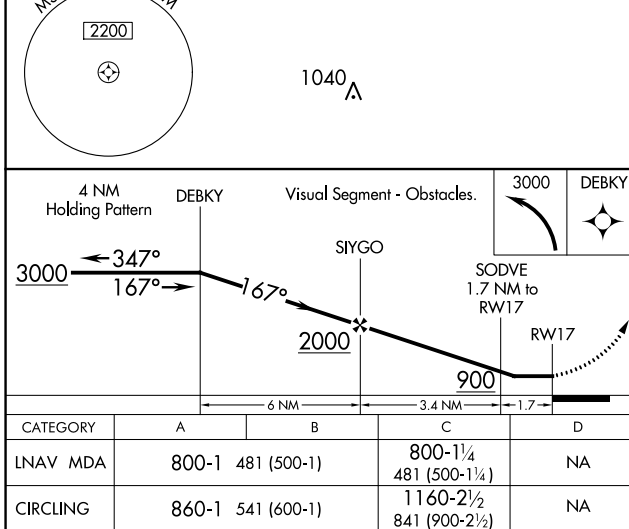
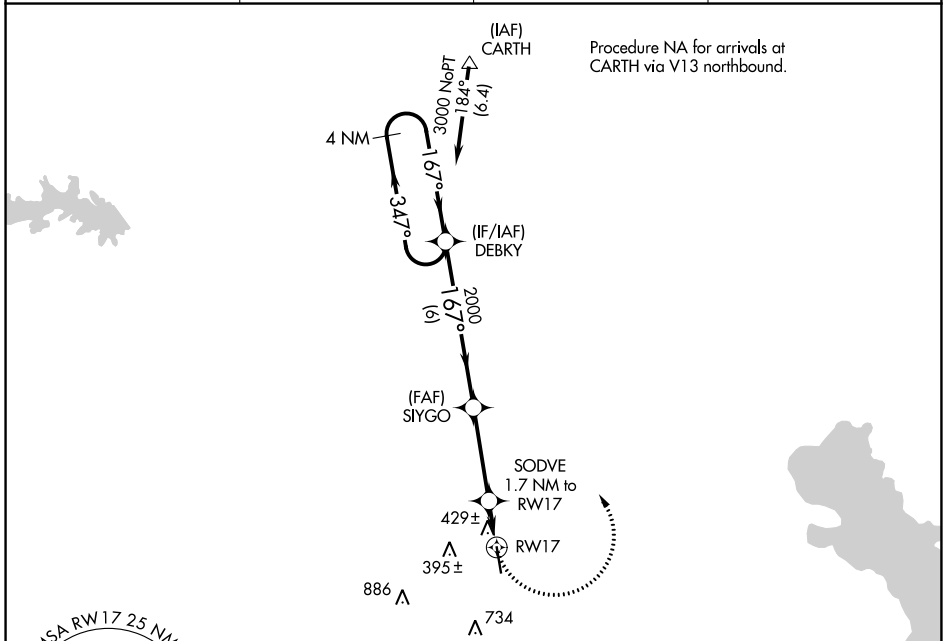
APP CRS	Rwy Idg	5501
167°	TDZE	319
	Apt Elev	319

RNAV (GPS) RWY 17

CENTER MUNI (F17)

RNP APCH.	MISSED APPROACH: Climbing left turn to 3000 direct DEBKY and hold, continue climb-in-hold to 3000.
▼ Rwy 17 helicopter visibility reduction below 1 SM NA.	
▲ NA Straight-In Rwy 17 NA at night, Circling Rwy 17 NA at night.	

AWOS-3PT 128.775	OCH AWOS-3 135.625	FORTH WORTH CENTER 126.325 346.25	UNICOM 122.8 (CTAF) 0
----------------------------	------------------------------	---	--



SC-5, 28 NOV 2024 to 26 DEC 2024

SC-5, 28 NOV 2024 to 26 DEC 2024