

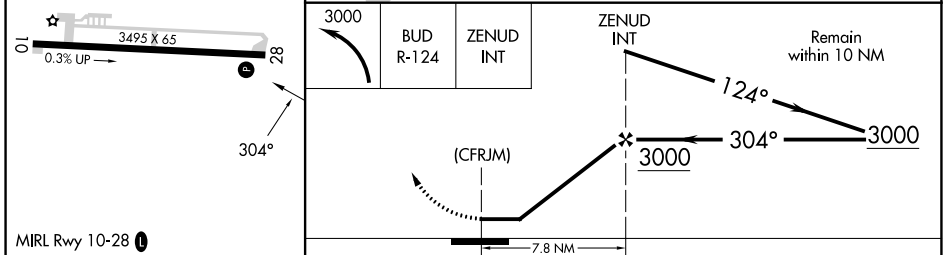
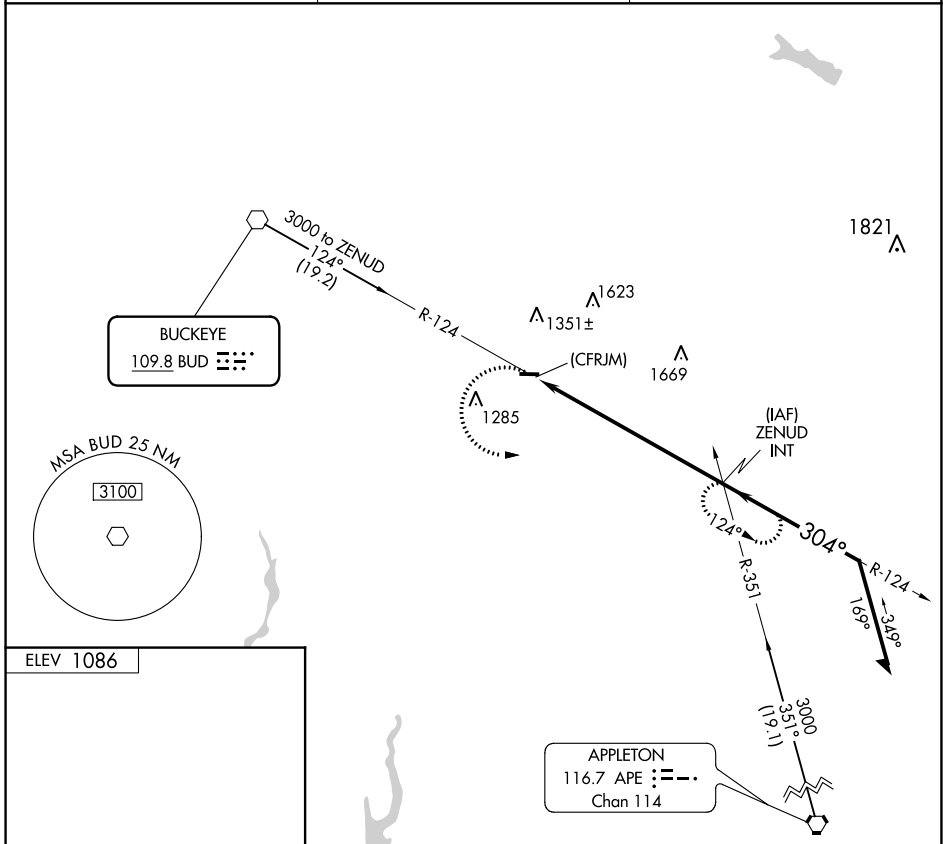
VOR BUD <b>109.8</b>	APP CRS <b>304°</b>	Rwy Idg TDZE Apt Elev	<b>N/A</b> <b>N/A</b> <b>1086</b>
-------------------------	------------------------	-----------------------------	---

**VOR-A**  
MORROW COUNTY (4I9)

**⚠ NA** Circling Rwy 28 NA at night. Rwy 28 helicopter visibility reduction below 1 SM NA. Use Marion altimeter setting, when not received use Mansfield altimeter setting and increase all MDA 60 feet and all visibilities ¼ SM.

MISSED APPROACH: Climbing left turn to 3000 on BUD VOR R-124 to ZENUD INT and hold.

MNN ASOS <b>119.975</b>	COLUMBUS APP CON <b>125.95 317.775</b>	UNICOM <b>122.8 (CTAF)</b>
----------------------------	---	-------------------------------



FAF to MAP 7.8 NM					
Knots	60	90	120	150	180
Min:Sec	7:48	5:12	3:54	3:07	2:36
CATEGORY	A	B	C	D	
<b>C</b> CIRCLING	1880-1	794 (800-1)	1940-2½ 854 (900-2½)	NA	

EC-2, 28 NOV 2024 to 26 DEC 2024

EC-2, 28 NOV 2024 to 26 DEC 2024