

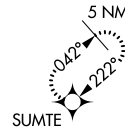
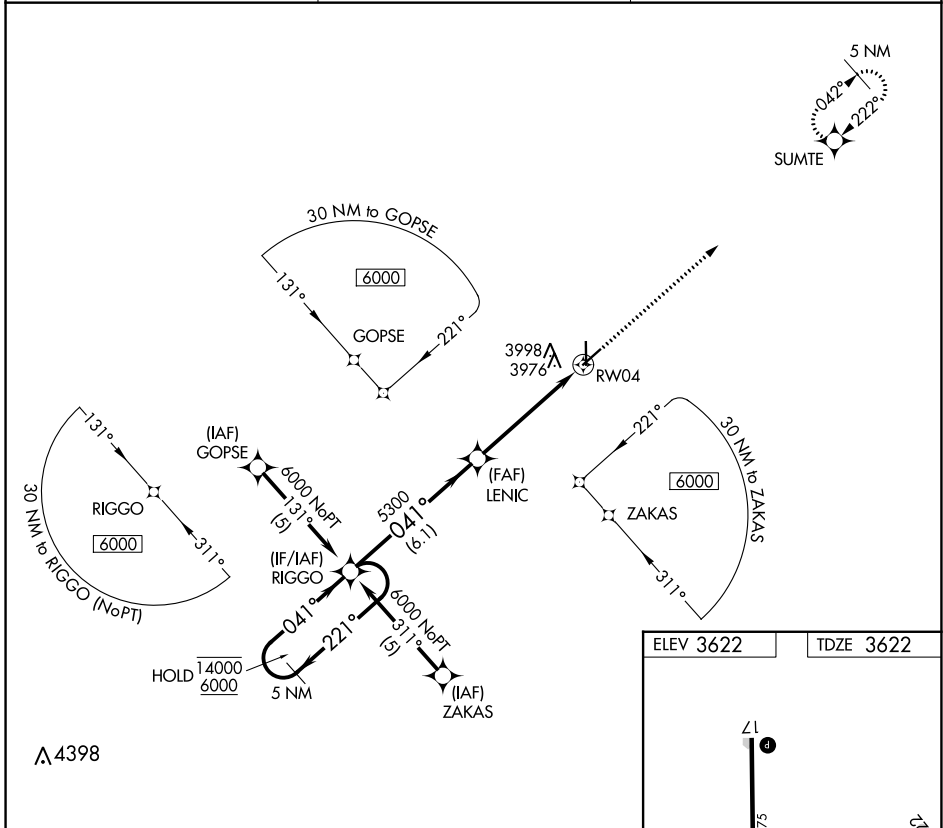
APP CRS <b>041°</b>	Rwy Idg <b>4900</b>
	TDZE <b>3622</b>
	Apt Elev <b>3622</b>

# RNAV (GPS) RWY 4

ELKHART-MORTON COUNTY (EHA)

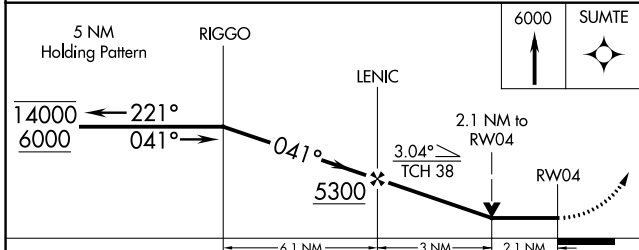
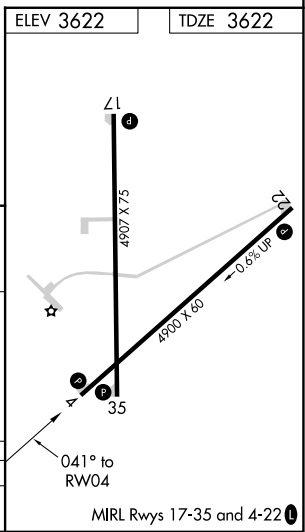
RNP APCH-GPS.	MISSED APPROACH: Climb to 6000 direct SUMTE and hold.
Rwy 4 helicopter visibility reduction below 3/4 SM NA.	

AWOS-3P <b>118.025</b>	KANSAS CITY CENTER <b>134.0 257.625</b>	UNICOM <b>122.8 (CTAF) 0</b>
---------------------------	--	---------------------------------



NC-2, 28 NOV 2024 to 26 DEC 2024

NC-2, 28 NOV 2024 to 26 DEC 2024



CATEGORY	A	B	C	D
LNAV MDA	4340-1	718 (800-1)	4340-2	718 (800-2)