

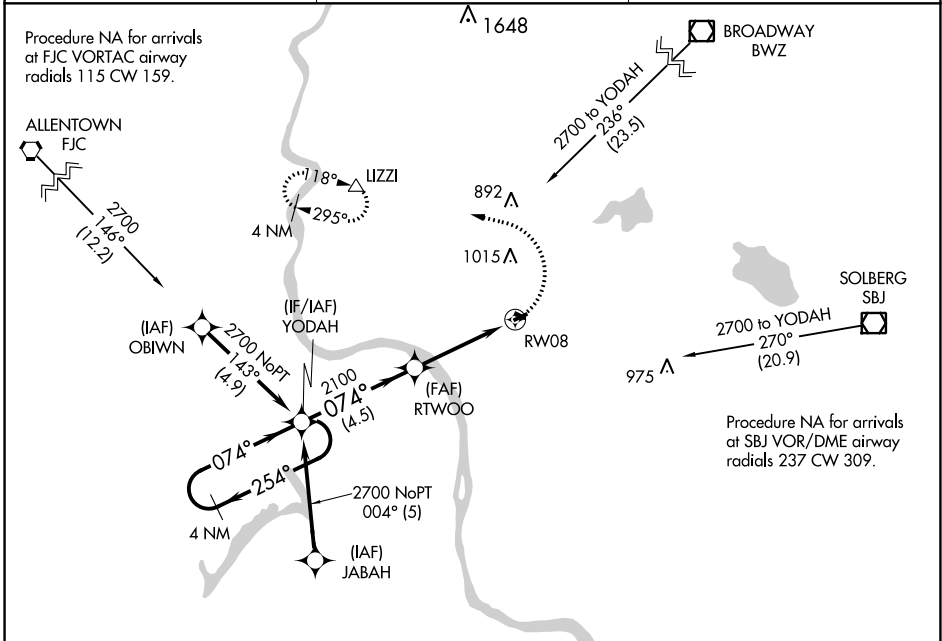
APP CRS	Rwy Idg	N/A
074°	TDZE	N/A
	Apt Elev	480

RNAV (GPS)-A

ALEXANDRIA (N85)

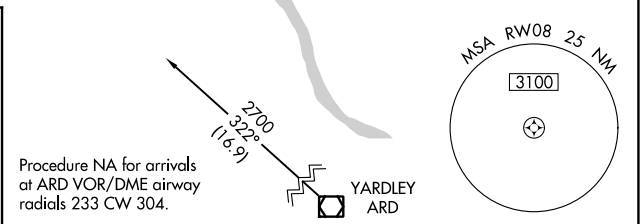
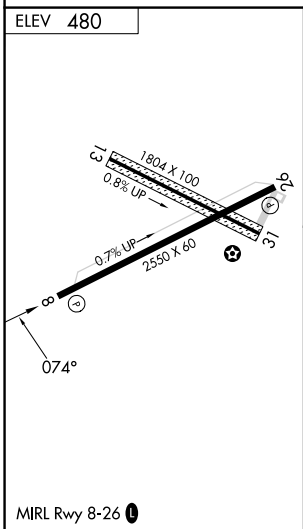
<p>▼ DME/DME RNP-0.3 NA. Use Lehigh Valley Intl, Allentown, PA altimeter setting. Procedure NA at night. Helicopter visibility reduction below 1 SM NA.</p> <p>▲ NA</p>	<p>MISSED APPROACH: Climbing left turn to 3000 direct LIZZI and hold, continue climb-in-hold to 3000.</p>
---	---

<p>ALLENTOWN APP CON</p> <p>119.65 124.45 351.8</p>	<p>UNICOM</p> <p>122.975 (CTAF)</p>	<p>121.8 0</p>
--	--	-----------------------

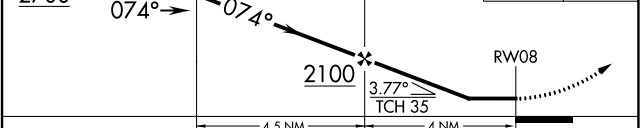


NE-2, 28 NOV 2024 to 26 DEC 2024

NE-2, 28 NOV 2024 to 26 DEC 2024



4 NM Holding Pattern	YODAH	RTWOO	3000	LIZZI
<p>VGSI and descent angles not coincident (VGSI Angle 4.00/TCH 30).</p>				



CATEGORY	A	B	C	D
CIRCLING	1240-1 760 (800-1)			NA