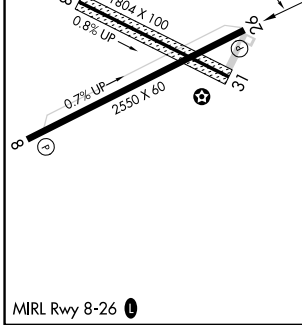
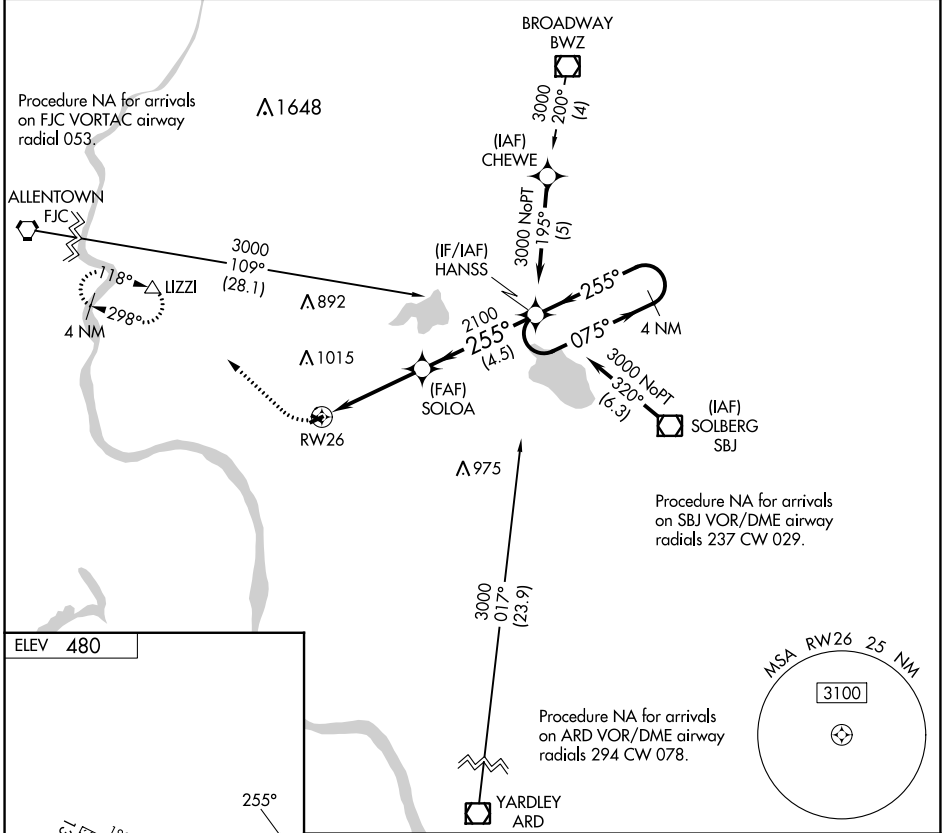


APP CRS	Rwy Idg	NA
255°	TDZE	NA
	Apt Elev	480

RNAV (GPS)-B

ALEXANDRIA (N85)

<p>▽ NA</p> <p>DME/DME RNP-0.3 NA. Use Lehigh Valley Intl, Allentown, PA altimeter setting. Procedure NA at night. Helicopter visibility reduction below 1 SM NA.</p>	<p>MISSED APPROACH: Climbing right turn 3000 direct LIZZI and hold.</p>	
<p>ALLENTOWN APP CON</p> <p>119.65 124.45 351.8</p>	<p>UNICOM</p> <p>122.975 (CTAF)</p>	<p>121.8 0</p>



<p>3000</p> <p>LIZZI</p> <p>△</p>	<p>4 NM</p> <p>HANSS</p> <p>Holding Pattern</p>		
<p>RW26</p> <p>3.75°</p> <p>TCH 30</p> <p>2100</p>	<p>255°</p> <p>075°</p> <p>3000</p>		
<p>4 NM</p>	<p>4.5 NM</p>		
<p>CATEGORY</p> <p>A</p>	<p>B</p>	<p>C</p>	<p>D</p>
<p>☐ CIRCLING</p> <p>1240-1</p> <p>760 (800-1)</p>	<p>NA</p>		

NE-2, 28 NOV 2024 to 26 DEC 2024

NE-2, 28 NOV 2024 to 26 DEC 2024