

RNAV (GPS) RWY 7

BLAIRSTOWN (1N7)

APP CRS 074°	Rwy Idg 2794
	TDZE 372
	Apt Elev 372

RNP APCH.

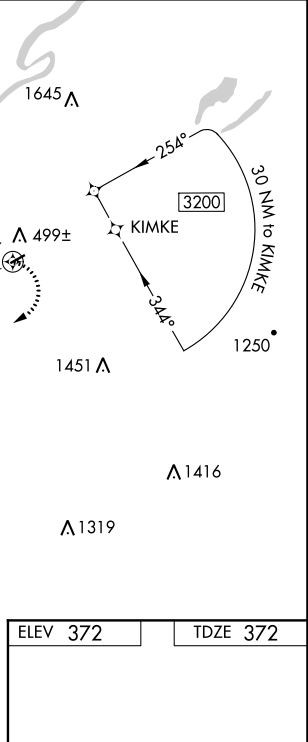
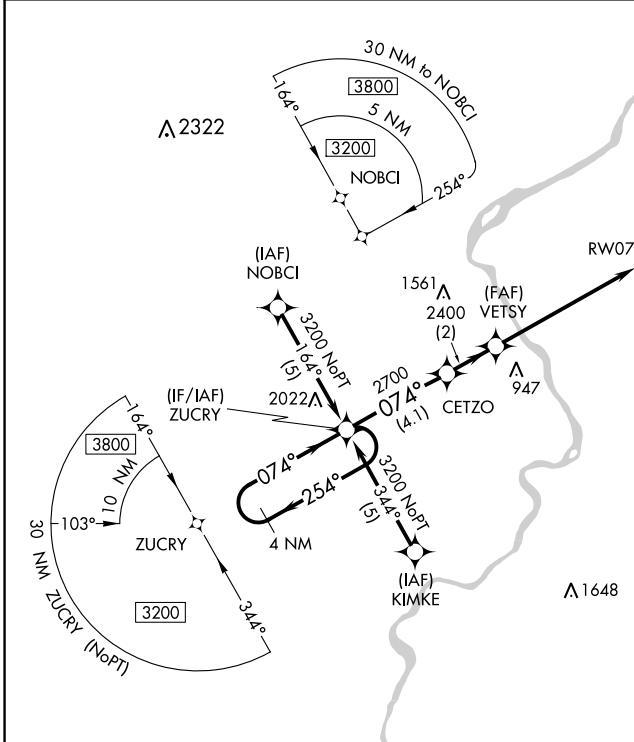
▼ When local altimeter setting not received, use Lehigh Valley altimeter setting. Procedure NA at night. Rwy 7 helicopter visibility reduction below 1 SM NA.

▲ NA

MISSED APPROACH: Climbing right turn to 3200 direct ZUCRY and hold.

NEWARK APP CON
127.6 379.9

UNICOM
123.0 (CTAF) 0



NE-2, 28 NOV 2024 to 26 DEC 2024

NE-2, 28 NOV 2024 to 26 DEC 2024

4 NM Holding Pattern		Visual Segment - Obstacles.		3200	ZUCRY
CATEGORY	A	B	C	D	
LNAV MDA	1140-1 768 (800-1)	1140-1¼ 768 (800-1¼)			NA
LEHIGH VALLEY ALTIMETER SETTING MINIMUMS					
LNAV MDA	1420-1¼ 1048 (1100-1¼)	1420-1½ 1048 (1100-1½)			NA

