

LOC/DME I-JFX 108.9 Chan 26	APP CRS 273°	Rwy Idg TDZE Apt Elev	4800 481 483
--	------------------------	-----------------------------	---

ILS or LOC RWY 27

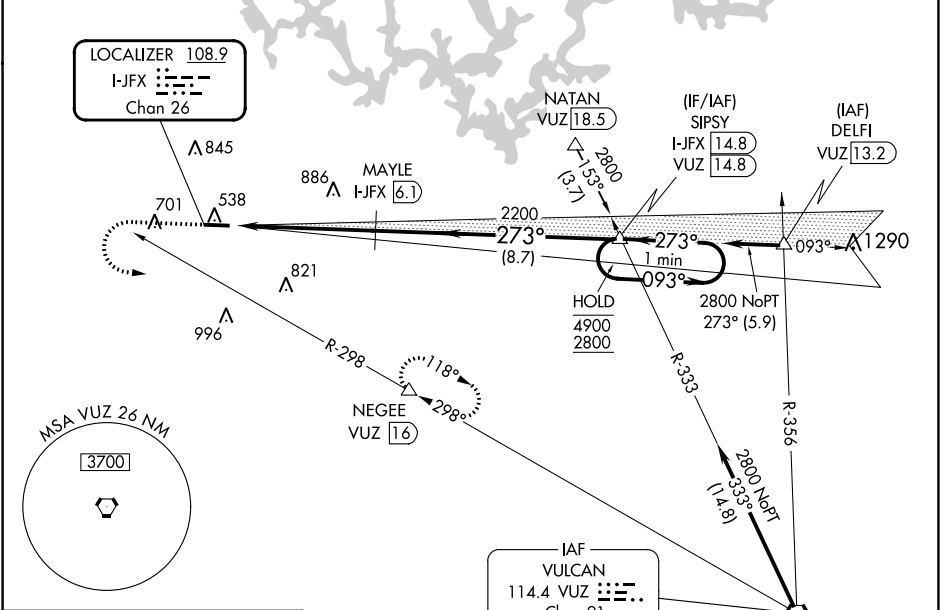
WALKER COUNTY/BEVILL FLD (JFX)

DME required.

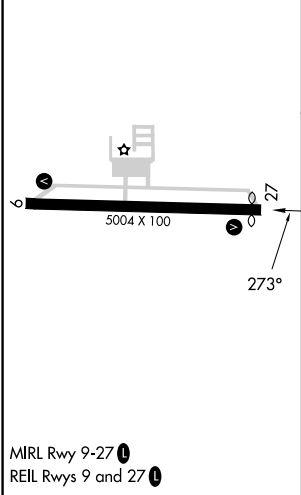
NA Rwy 27 helicopter visibility reduction below $\frac{3}{4}$ SM NA. VDP NA when using Birmingham altimeter setting. When local altimeter setting not received, use Birmingham altimeter setting; increase DA to 892 feet and S-ILS all Cats visibilities $\frac{1}{4}$ SM; increase all MDAs 120 feet and S-LOC Cats C and D and Circling Cats C and D visibility $\frac{1}{4}$ SM.

MISSED APPROACH: Climb to 1500 then climbing left turn to 3000 on VUZ VORTAC R-298 to NEGEE/16 DME and hold.

AWOS-3PT 119.225	BIRMINGHAM APP CON 127.675 338.2	GCO 121.725	UNICOM 123.075 (CTAF) 0
----------------------------	--	-----------------------	-----------------------------------



ELEV 483	D	TDZE 481
----------	----------	----------



1500	3000	VUZ R-298	NEGEE	MAYLE I-JFX [6.1]	SIPSY I-JFX [14.8]	One Minute Holding Pattern
*LOC only						
*I-JFX [0.8]		*I-JFX [2.5]	2200	273°	093°	4900
1.6 NM		3.7 NM	8.7 NM	2200	273°	2800
CATEGORY	A	B	C	D	GS 3.00° TCH 44	
S-ILS 27	788- $\frac{7}{8}$		307 (400- $\frac{7}{8}$)			
S-LOC 27	1040-1	559 (600-1)	1040-1 $\frac{5}{8}$	559 (600-1 $\frac{5}{8}$)		
C CIRCLING	1040-1	1080-1	1160-2	1360-2 $\frac{3}{4}$	877 (900-2 $\frac{3}{4}$)	
	557 (600-1)	597 (600-1)	677 (700-2)	877 (900-2 $\frac{3}{4}$)		