

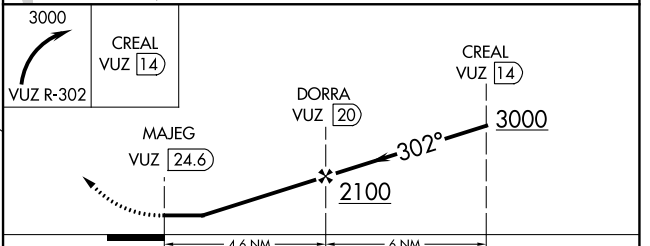
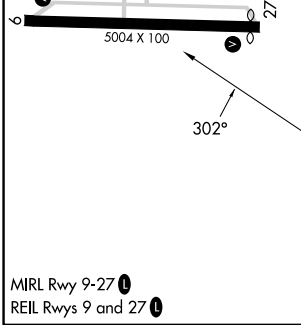
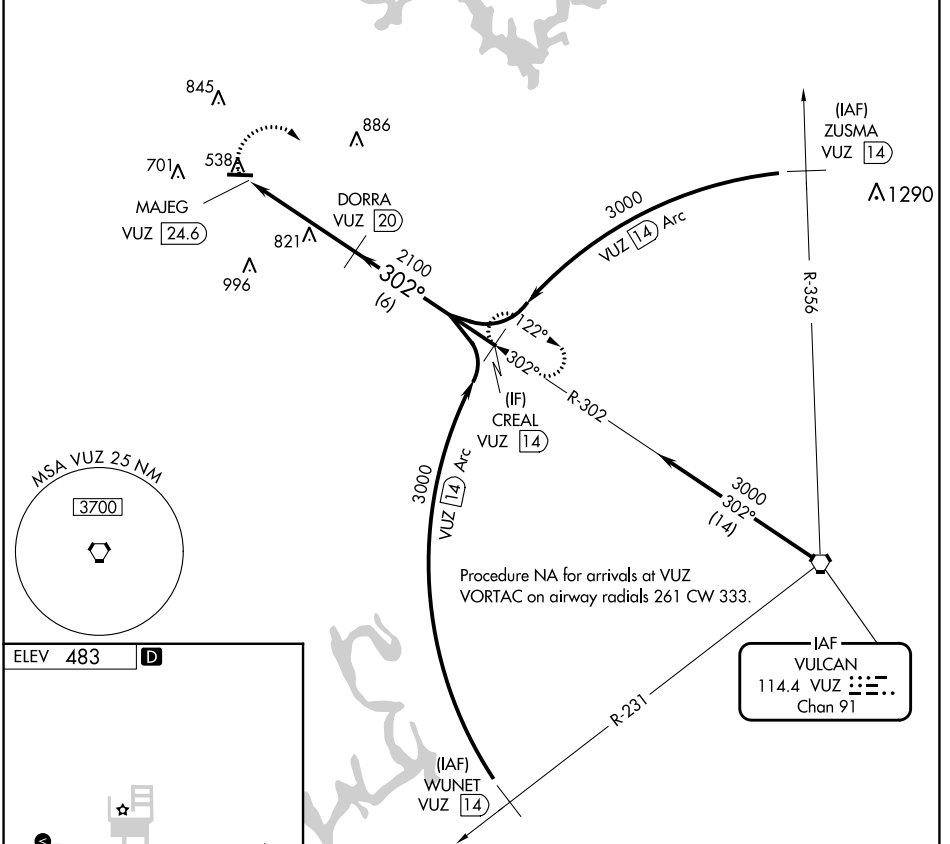
VORTAC VUZ 114.4 Chan 91	APP CRS 302°	Rwy Idg TDZE Apt Elev	N/A N/A 483
--	------------------------	-----------------------------	--

VOR/DME-A
WALKER COUNTY/BEVILL FLD (JF'X)

⚠ When local altimeter setting not received, use Birmingham altimeter setting and increase all MDA 120 feet and Cat C/D visibility ¼ mile.

MISSED APPROACH: Climbing right turn to 3000 on VUZ VORTAC R-302 to CREAL/14 DME and hold.

AWOS-3PT 119.225	BIRMINGHAM APP CON 127.675 338.2	GCO 121.725	UNICOM 123.075 (CTAF) 📻
----------------------------	--	-----------------------	--



CATEGORY	A	B	C	D
CIRCLING	1160-1 677 (700-1)	1160-1¼ 677 (700-1¼)	1160-2 677 (700-2)	1360-2¾ 877 (900-2¾)

SE-4, 28 NOV 2024 to 26 DEC 2024

SE-4, 28 NOV 2024 to 26 DEC 2024